

LOJER[®]

For easy care



SALLI Hospital beds
F1,F2,F3,H2,H4
Operating instructions

Version 1.3 04.09.2015

Limited International Warranty

The warranty period is determined in the agreement documents. Unless otherwise agreed, the warranty period for manufacturing and material defects is **2 years**, except the steel structure and welds which carry a warranty of **10 years**. For wearing parts (like upholsteries, batteries, ropes/wires) the warranty is **1 year**.

Warranty Conditions

The warranty is only valid if the warranty demand is presented together with the original invoice or sales slip or (order) confirmation, and the serial number on the product has not been defaced.

LOJER's obligations are limited to the repair or, at its discretion, replacement of the product or the defective part. Defective parts shall be replaced with new or equivalent "as new" parts. If necessary, the entire product shall be exchanged with an identical or functionally identical product. The value of the warranty service is always limited to the value of the defective product. The defective parts removed from a product as part of a warranty case shall become the property of LOJER and shall be retained for by the End Customer for LOJER, if necessary. If these parts cannot be returned to LOJER upon request, LOJER is entitled to charge for a corresponding amount. When genuine LOJER parts are installed in a LOJER product under warranty, only the remaining warranty period of the repaired device applies.

Warranty repairs must be carried out by LOJER or authorised LOJER Dealers. No re-imbursement will be made for repairs carried out by a non-LOJER representative, and any such repair work or damage to the products caused by such repair work will not be covered by this warranty.

The product is designed and manufactured to meet the requirements for CE-marking. This product is not considered to be defective in materials nor workmanship if it requires adaptation in order to conform to other local or national technical or safety standards.

This warranty covers none of the following:

- a) Periodic checks, maintenance and repair or replacement of parts due to normal wear and tear (such as upholsteries, cables, ropes or reduced capacity of accumulators);
- b) Costs relating to transport, removal or installation of the product;
- c) Misuse, including the failure to use this product for its normal purposes or incorrect installation;
- d) Damage caused by lightning, water, fire, acts of God, natural catastrophes, war, public disturbances, incorrect mains voltage or any other cause beyond the control of Lojer;
- e) Spillage of chemicals or liquids, or use of any other hazardous or non-instructed substances, which may affect the product;
- f) Minor defects or deviations from the product specifications which are immaterial, negligible or trivial as regards to the value or the functioning of the product

Proceeding in a Warranty Case

The following information is an explanation of what you must do in the case of a warranty claim. First, please contact your LOJER dealer and describe the problem (possibly with photographs or videos) and inform LOJER of the product type and serial number. LOJER's technicians will help to diagnose defects and malfunctions, and are often capable of eliminating the malfunction over the phone.

In the event that warranty service is required, you should return the product to the dealer from whom it was purchased, or directly to LOJER's factory in Finland. In this case, the customer is responsible for the dispatch and insurance of the product, and the transport and insurance costs shall be borne by the customer. LOJER shall assume the costs for the materials / spare parts and the labour costs as required, as well as the standard return transportation to the sender. In case of difficulty, details of local dealers are available online at www.lojer.com. You may also contact the service centre in Finland (e-mail: service@lojer.com).

The guarantee will become void if:

- A Lojer product is equipped or used with parts that have not been approved by Lojer for the product in question;
- Someone other than a person authorised by Lojer has serviced/repaired or otherwise modified the device and these measures have caused a fault in the product;
- The product is cleaned with cleaning agents other than those specified in the operating manual, or if the product is allowed to come into direct contact with agents other than those specified in the manual;
- Regular maintenance has not been performed.

Content

1	Salli hospital bed	1
2	Salli hospital bed parts	1
2.1	Salli H-model bed parts	1
2.2	Salli F-model bed parts	2
2.3	Options and accessories	2
3	Safety precautions	3
4	Measures to be taken before use	4
5	Use of the hospital bed and accessories	5
5.1	Locking of the castors	5
5.2	Mattress platform height adjustment	7
5.3	Adjustment of the backrest	8
5.4	Adjustment of the upper and lower leg section	8
5.5	Trendelenburg adjustment	9
5.6	Bed end attachment	9
5.7	Bed side rail	10
5.7.1	Bed side rail, normal model (1332SKKP)	10
5.7.2	Raised side rails (1332SKKPKOR)	12
5.7.3	Eco model side rails (1332KSKP, 70524KP)	13
5.8	Installation of the lifting pole (101910)	14
5.9	Installation of the lift support (lift support 80/90 ru)	14
5.10	Installation of the IV-pole (60121 or 60122)	16
5.11	Urine bag holder	16
5.12	Short frame assembly to ease transport	17
6	Cleaning and disinfection	18
6.1	Detachment of the sleeping platforms	18
7	Service	19
7.1	User check operations	19
7.2	Annual service	19
7.3	Annual service schedule	20
8	Fault detection	21
9	Technical specifications	21
9.1	Data of the type plate and markings on the bed	22
9.2	Standards used	24
10	Spare parts and diagrams	24
11	Contact information and references	34

1 Salli hospital bed

This document include instructions how to use Lojer's SALLI hospital beds.

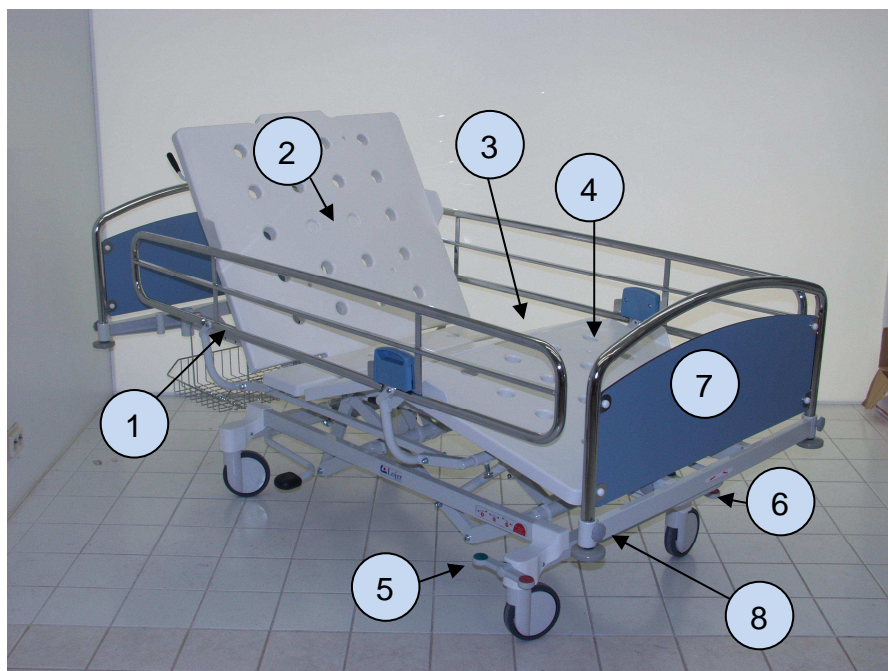
Salli hospital beds have been designed for institutional and hospital use for adults and patients over 12 years of age and taller than 146cm.

In model Salli H2 (80/90) there is hydraulic adjustment function for regulating the height and mechanical or gas spring assisted function for regulating the backrest and as an option a gas spring assisted trendelenburg adjustment. In model H4 (80/90) there is also a mechanical or gas spring assisted adjustment for upper and lower knee leg section. Salli F1, F2 and F3 are fixed height beds having only backrest and/or leg section adjustments with mechanical or gas-spring assisted functionality.

IMPORTANT! Read instructions for use before using the hospital bed.

2 Salli hospital bed parts

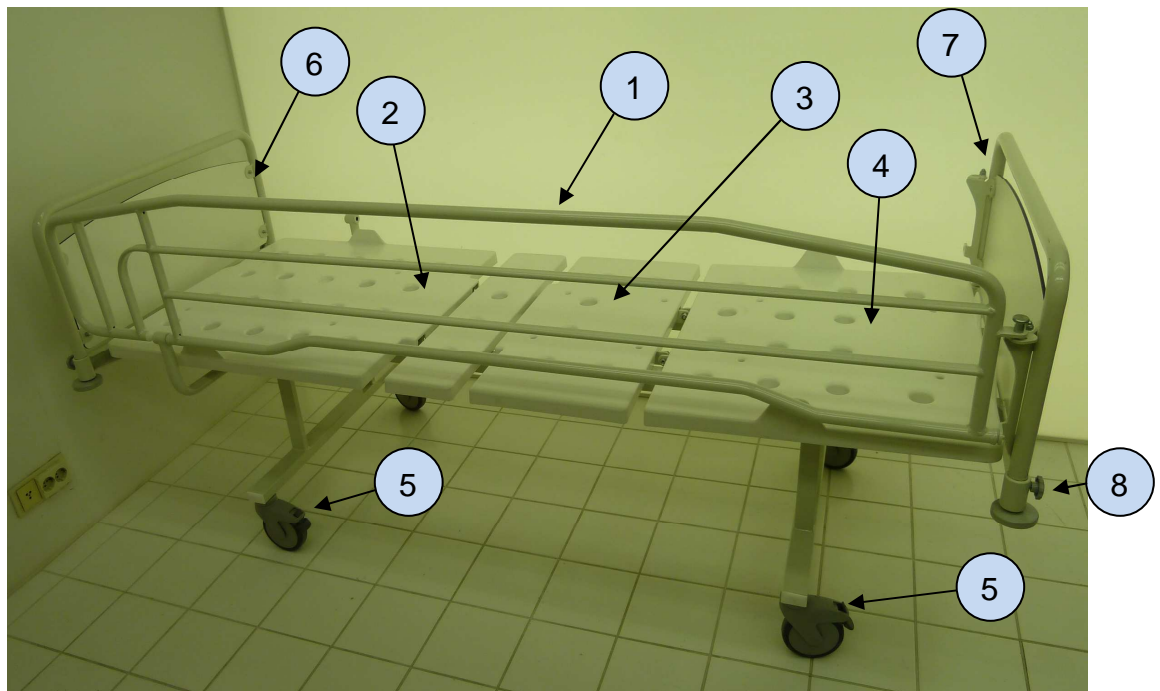
2.1 Salli H-model bed parts



- 1 Bed rail, normal model (optional)
- 2 Backrest section
- 3 Upper leg section
- 4 Lower leg section
- 5 Central brake pedal
- 6 Trendelenburg adjustment handle (option)
- 7 Bed end
- 8 Handwheel for bed end attachment
- 2+3+4 Mattress platform (lying surface)

Figure 1. Salli H4, hospital bed

2.2 Salli F-model bed parts



- 1 Bed rail, eco-model (optional)
- 2 Backrest section
- 3 Upper leg section
- 4 Lower leg section
- 5 Wheel brake, individual locking castors
- 6 Bed end
- 7 Bed end for eco side rails
- 8 Handwheel for bed end attachment
- 2+3+4 Mattress platform (lying surface)

Figure 2. Salli F3, fixed height hospital bed

2.3 Options and accessories

The hospital bed can be purchased with the following options:

- Bed ends and side rails with chromed or epoxy coated metal parts
- Different colour alternatives for the laminate plates of the bed ends

For Salli hospital bed the following accessories, which must be ordered separately can be used:

- Bed rails, different versions; normal, raised and eco model
- Lifting pole, (101910)
- IV-pole, (60121, 60122)
- Lift support, (Lift support 80 ru or Lift support 90 ru)
- Food tray
- Urine bag holder
- Basket for accessories

3 Safety precautions

Adhere to the following safety precautions.

IMPORTANT!	<i>It is only allowed to use accessories approved by the manufacturer intended for the bed type in question.</i>
IMPORTANT!	<i>The mattress must be in accordance with the manufacturer's instructions regarding the height and width.</i>
IMPORTANT!	<i>The rescue sheet must be attached to the adjustable sleeping platform. The rescue sheet must not be attached to the bed frame or through the parts of the frame, risk of patient entrapment and damaging mechanics.</i>
IMPORTANT!	<i>It must be possible to raise and lower the bed rail in an unimpeded way so that no external obstacle (mattress, its air hoses, bed linen or other object) supports or wedges the rail in the upper position without the securing of the latching mechanism of the rail itself.</i>
IMPORTANT!	<i>The functionality of the bed side rail lock mechanism must be double-checked in connection with the rail elevation adjustment. During use, always check that side rail will lock in up position correctly.</i>
IMPORTANT!	<i>Always lock the castors before patient is laid on bed.</i>
IMPORTANT!	<i>Only a patient is allowed to be on the mattress platform while the bed is being adjusted.</i>
IMPORTANT!	<i>Do not sit or stand on either (outermost) end of bed, risk of overbalance (Salli F-model beds). See chapter 9.1 markings on the bed, figures 24 and 25.</i>
IMPORTANT!	<i>The hospital bed must always be left in the lowest position in order to minimise any risk of a patient falling from the bed.</i>
IMPORTANT!	<i>Always ensure that there is nobody between the mechanisms while the bed or bed rails are being adjusted (danger of entrapment).</i>
IMPORTANT!	<i>If there is a risk that the patient may fall from the bed. Bed side rails must be kept at the highest position when the patient is left without monitoring. (danger of falling off the bed and increased entrapment risk when lift support is used)</i>
IMPORTANT!	<i>If the bed or its accessories has a malfunction, it must be removed from use immediately and be taken to a service.</i>

4 Measures to be taken before use

Check that the transport package is unbroken and no transport damages have occurred. Remove all packing material from around the bed. Also remove possible transport supports between mechanics.

All the parts mentioned in the dispatch note must be included in the delivery. If a client detects any deficiencies regarding the delivery, contact immediately the supplier.

Take the following measures before using the hospital bed.

IMPORTANT!	<i>Read the instructions for use and safety precautions before using the hospital bed.</i>
IMPORTANT!	<i>Keep the wheel brakes locked always when there is no need to move bed and before patient is laid on the bed. This helps to prevent falling accidents caused by unstable bed.</i>
IMPORTANT!	<i>Ensure that there is sufficiently space around the bed and both over and under the bed for the different functions and mechanism.</i>
IMPORTANT!	<i>Ensure that the side rails function properly and can be locked in the upper position when/if needed.</i>

5 Use of the hospital bed and accessories

The hospital bed is intended to be used in normal, dry interior conditions. The room temperature may vary between +10 and +40 °C and the moisture between 30-75 %. The permissible storage temperature of the bed is between -5 and +60 °C and the moisture of the storage space between 30 and 75 %.

This paragraph contains information about the installation and use of the accessories of the hospital bed. Some of the accessories can be purchased separately.

IMPORTANT! Always use accessories approved by the manufacturer!

5.1 Locking of the castors

If Salli hospital bed is equipped with castors, it can have either central locking or individual locking castors.

With central locking castors, lock the castors by pressing the pedal at the foot end of the hospital bed to the lowest position. In the middle position (pedal in the horizontal position) castors can turn freely.

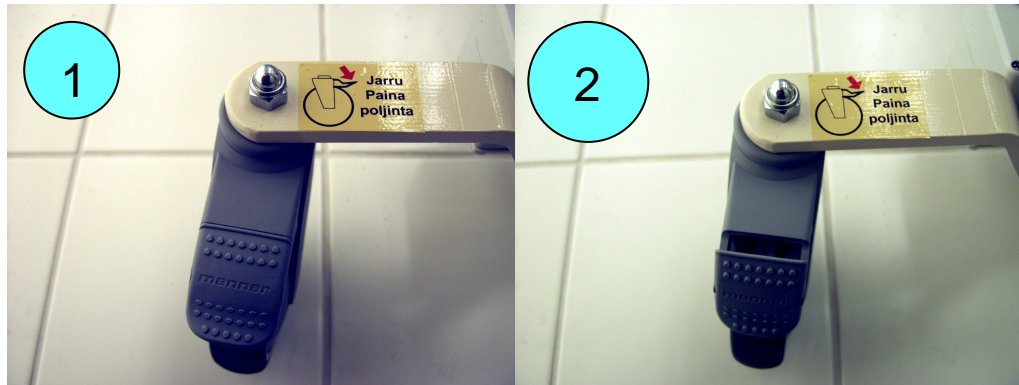
In the uppermost position pedal direction locks the castor to ease transport. Lock and check the direction locking wheel by moving the headend of the hospital bed sideways.



- 1 Castors locked (brake, red button down)
- 2 Castors turn freely (pedal in middle position)
- 3 Direction lock (green button down)

Figure 3. Locking of the central locking castors

Salli hospital bed equipped with individually locking castors. Lock the castor by pressing the pedal above wheel. When the pedals are in the uppermost position, castors are free. Each castor must be locked individually.



- 1 Castor is free
- 2 Castor is locked, pedal down (brake on)

Figure 4. Individually locking castors

IMPORTANT! Always keep wheels locked when there is no need for moving the bed. This helps to prevent falling accidents caused by unstable bed.

IMPORTANT! Before moving the bed it is advisable to detach some of the accessories to minimise the risk of collision if they are not needed in time of transportation. Lifting pole, lift support, IV-pole etc. accessories which expands remarkably needed space around hospital bed.

5.2 Mattress platform height adjustment

Salli H hospital bed has hydraulic height adjustment. Mattress platform height can be adjusted between 46-81 cm. F- models have fixed height 56cm with 125mm castors. Raise the mattress platform by pressing the pump actuating foot pedal downward. Lower the platform by lifting up the foot pedal.

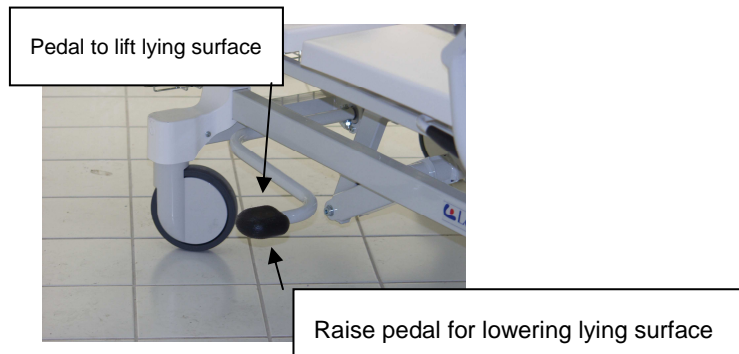


Figure 5. Adjustment for the hydraulic height adjustment

IMPORTANT! Always take care that during mechanical movements of bed there is nobody or anything between or under the bed mechanics (danger of entrapment).

IMPORTANT! The hospital bed must always be left in the lowest position in order to minimise any risk of a patient falling from the bed.

5.3 Adjustment of the backrest

The backrest of the hospital bed can be regulated between 0-70°. Adjustment is mechanical or gas spring assisted. With mechanical adjustment the back rest can be lifted and lowered manually by hand moving the back rest platform. With gas spring assisted adjustment the backrest can be regulated by pressing the handle and adjust the backrest in desired position.

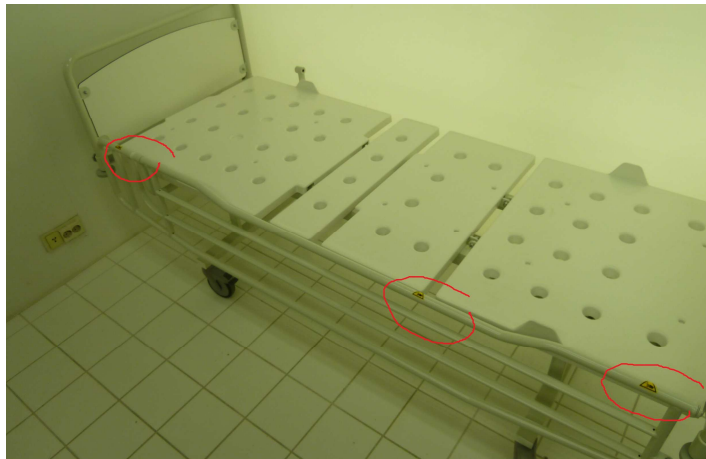


Figure 6. Potential hazard areas for hand/finger entrapment when adjusting mattress platform, backrest, knee, foot section.

- | | |
|-------------------|--|
| IMPORTANT! | <i>Always ensure that there is nobody or anything under the bed or between parts of the mattress platform while the bed mechanics is raised or lowered (danger of entrapment).</i> |
| IMPORTANT! | <i>Always be careful when adjusting lying surface parts. Risk of entrapment between mattress surface parts and side rail. See figure 6.</i> |

5.4 Adjustment of the upper and lower leg section

Salli F3 and H4 hospital beds have either a mechanical or gas spring assisted adjustment for the upper and lower leg section. Adjust the upper leg section in the desired angle by lifting up from knee area (upper leg part) or in gas spring assisted version by lifting the handle and raising by hand from knee area if needed. Lowering is done manually (mechanical bed) or in the gas spring assisted version by releasing the handle and at the same time pressing the knee part downwards. Lower leg section can be adjusted desired angle manually.

- | | |
|-------------------|--|
| IMPORTANT! | <i>Always ensure that there is nobody or anything under the bed or between parts of the mattress platform while the bed mechanics is raised or lowered (danger of entrapment).</i> |
| IMPORTANT! | <i>Always be careful when adjusting lying surface parts. Risk of entrapment between mattress surface parts and side rail. See figure 6.</i> |

5.5 Trendelenburg adjustment

Salli hospital bed has as an option a trendelenburg adjustment, which operates with a gas spring. Mattress platform tilts to the trendelenburg (12°) or antitrendelenburg (6°) position. Platform can be tilted by raising lever in leg end and when the mattress platform is in the desired angle, loosen the lever and the platform remains in the desired position.



Figure 7. Trendelenburg adjustment

IMPORTANT! Always before changing height of mattress platform (hydraulic beds) adjust mattress platform to horizontal level.

IMPORTANT! When bed is in trendelenburg position do not leave patient without supervision. Always after use level mattress platform horizontal.

5.6 Bed end attachment

There are differences between bed ends according used side rail model. For eco model rails there is attachment part for rail locking in bed end part. Also with raised model side rail a higher bed end model is recommended.

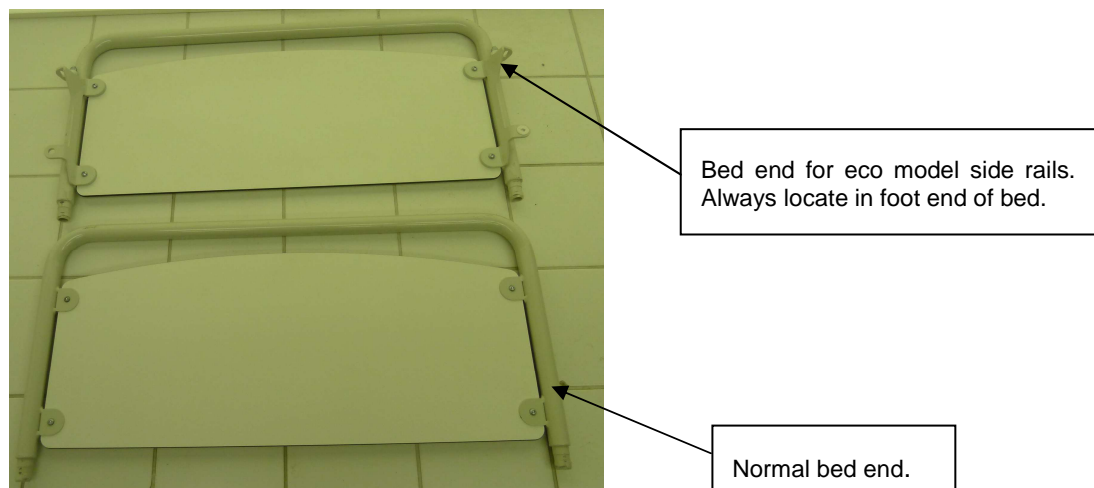


Figure 8. Bed end models

Bed ends are attached with hand wheels screw. See figures 1 and 2. To tighten bed end, turn clockwise, to remove bed end open anti-clockwise.

5.7 Bed side rail

There are different bed side rail models available for Salli hospital beds. All models are either factory installed or can be installed afterwards. All side rails can be detached easily from bed if needed.

5.7.1 Bed side rail, normal model (1332SKKP)

The height of the side rail can be adjusted by raising the rail from the uppermost pipe part of rail. The rail is locked in the desired position when you hear a click. When you want to lower the rail, grab the uppermost pipe and pull the handle in the end of the rail and you can lower the rail down.

Installation and detachment of the rail: The rails have been attached to the bed frame by two spring locking knobs underneath upper frame. When you detach the rails, pull the knob downward and simultaneously pull the rail away from the bed. When you install the rail, pull the locking knob down and press the rail in place. Make sure when installing that side rails are positioned correctly, side rail release handle located in leg end of bed. Ensure that the rails are locked in place, correctly installed and side rails are locking in adjustment positions.

Recommended mattress height with normal model side rail is max. 13cm.

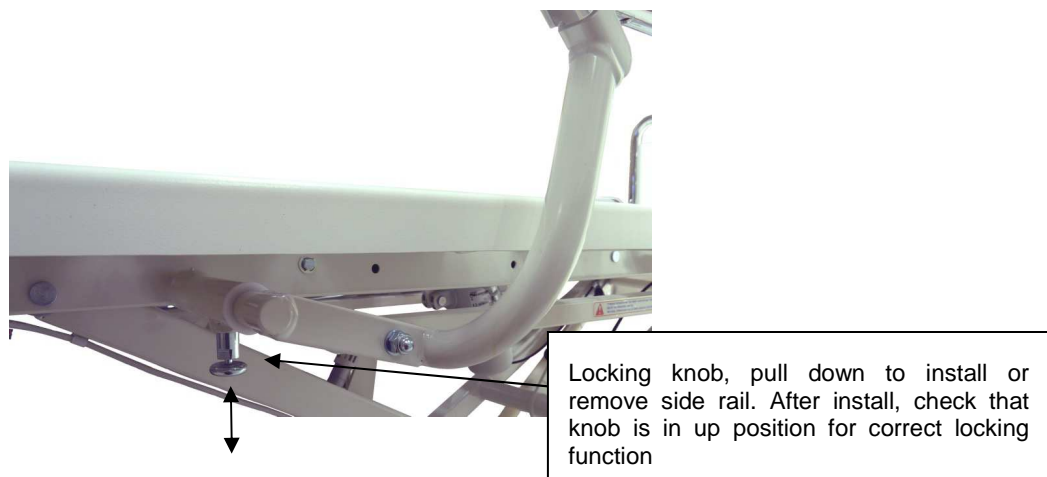


Figure 9. Side rail attachment below upper frame

IMPORTANT!	<i>Ensure that there is nobody or anything between the rails when they are being adjusted. Ensure that you hear a click, that the rail is locked in the upper position.</i>
IMPORTANT!	<i>When a patient is being transported, lower the adjustments of the sleeping platform and the bed to lowest positions and lift the rails up to minimise a patient's risk of falling.</i>
IMPORTANT!	<i>Always use mattress size which has been defined by manufacturer for combination of side rail / bed model.</i>
IMPORTANT!	<i>A rail, which is in the middle or intermediate position will not prevent a patient's fall from the bed. Consequently, if a rail is in the middle position, it does not meet the requirements of standard IEC 60601-2-52 and the patient safety is endangered.</i>

5.7.2 Raised side rails (1332SKKPKOR)

Raised side rail functions are like side rail (1332SKKP). Install, detaching and adjustment are similar as in 1332SKKP model. Raised side rail has a top part with two positions to add patient safety when using air mattresses or thick comfort mattresses.

Adjust the top part of the side rail by pulling locking knobs and turn it at the same time. When the top part of the side rail is nearby of its available position release locking knobs. Ensure the locking by moving the top part of the rails. It will lock to the desired position when you hear a click from locking knob.

Recommended mattress height with raised model side rail is max. 22cm.

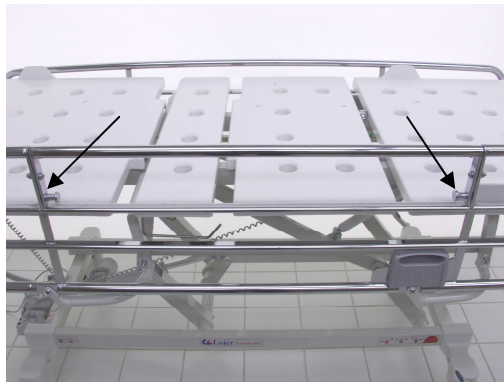


Figure 10. Locking knobs for rail part adjustment

- | | |
|-------------------|--|
| IMPORTANT! | <i>Ensure that there is nobody or anything between the rails when they are being adjusted. Ensure that you hear a click, that the rail is locked in the upper position.</i> |
| IMPORTANT! | <i>When a patient is being transported, lower the adjustments of the sleeping platform and the bed to the lowest positions and lift the rails up to minimise a patient's risk of falling.</i> |
| IMPORTANT! | <i>Always use mattress size which has been defined by manufacturer for combination of side rail / bed model.</i> |
| IMPORTANT! | <i>A bed rail, which is in the middle or intermediate position will not prevent a patient's fall from the bed. Consequently, if a rail is in the middle position, it does not meet the requirements of standard IEC 60601-2-52 and the patient safety is endangered.</i> |

5.7.3 Eco model side rails (1332KSKP, 70524KP)

There are two different models of eco rails available for Salli beds. Both functions and are assembled same way, only difference is in dimensional structure which allows 70524KP type to use thicker mattresses.

Installing of eco rails starts to attachment of front support underneath upper frame. Raise backrest up position. Install front support so that it will line with holes in upper frame and fix it with bolts. Notice white cap heading head end of bed. Standard front system has bolt and nut fixing and it requires tools for attachment. Quick release system is supplied with wingnuts and support plate which can be attached by hands.

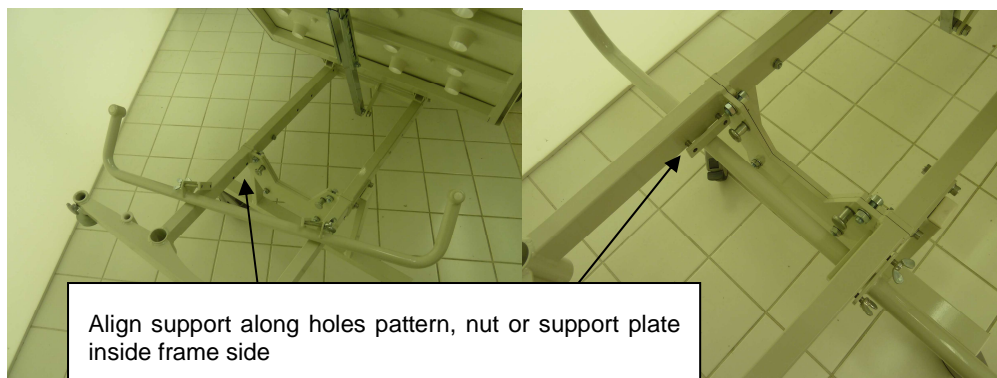


Figure 11. Attachment of front support, quick release system

If foot bed end is not in place, put it into place but do not tighten it yet. Notice extra parts in bed end for eco rails attachment pointing inward bed. Side rail lock will be located into foot end of the bed. Slide rail into front support, notice that plastic bearing for side rail is in place. Raise bed end in foot end a little bit and slip rail into place and lower bed end into hole. Repeat on other side and tighten bed end attachment. Check locking function of side rail.

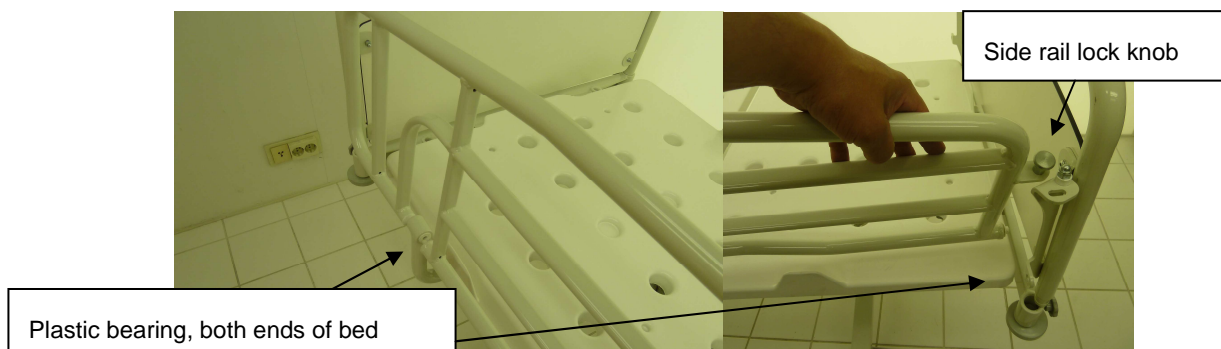


Figure 12. Eco model rail assembly, head and foot end of bed

Recommended mattress height for 1332KSKP is maximum 13 cm and for 70524KP maximum 18 cm.

IMPORTANT! *Ensure that there is nobody or anything between the rails when they are being adjusted. Ensure that you hear a click, that the rail is locked in the upper position.*

IMPORTANT! *When a patient is being transported, lower the adjustments of the sleeping platform and the bed to the lowest positions and lift the rails up to minimise a patient's risk of falling.*

IMPORTANT! *Always use mattress size which has been defined by manufacturer for combination of side rail / bed model.*

5.8 Installation of the lifting pole (101910)

Lifting pole can be used to help patient move or get up into a sitting position in the bed. Install the pole in the sleeve at the head end of bed so that it is not possible to turn pole sideways. You do not need any tools for the installation.

The pole is correctly installed, when the handle is hanging above the mattress platform and the pole does not move sideways. The maximum safe working load for the lifting pole is 75kg.

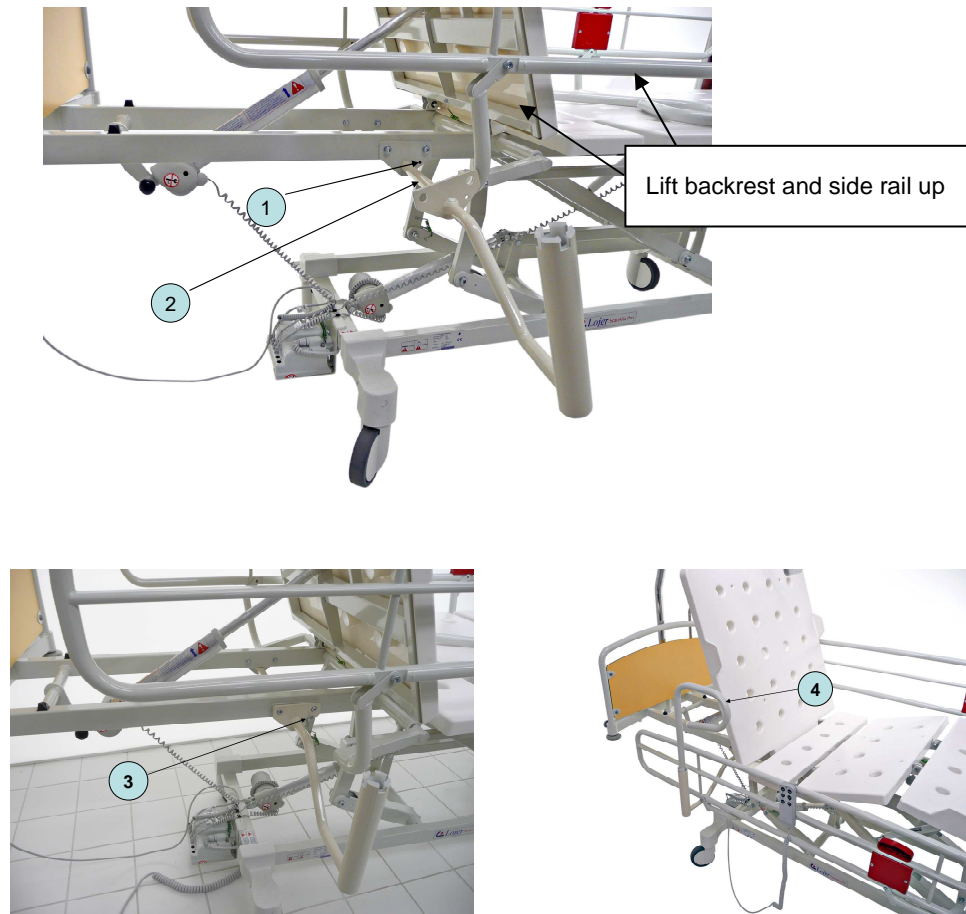
IMPORTANT! *Before using the lifting pole, ensure that it is above the sleeping platform and locked in a sideways position.*

IMPORTANT! *Check that there is sufficiently room above the bed. When you lift the bed, the lifting pole also raises.*

5.9 Installation of the lift support (lift support 80/90 ru)

1. Lift the rail and backrest up.
2. Open the wing nut on the clip plate in the frame.
3. Push the shaft of the support through the holes in the clip plates.
4. Turn the wing nut until it is tight.
5. Set the handle of the lift support in the hole of the support.
6. Turn the support to the desired direction.

If the lift support is correctly installed, there is sufficiently space for the rail to move freely. Lift support can be used only along with normal side rails. When eco side rails are in use, lift support is not available. Maximum safe working load for side rails is 50 Kg.



- 1 Location of the wing nut
- 2 Shaft of the lift support
- 3 Fastening of the thumb nut
- 4 Handle of the lift support

Figure 13. Installation of the lift support

IMPORTANT! Check that there is sufficiently room around the bed. When you lift the bed the lift support also moves and the bed space requirement also increases sideways.

IMPORTANT! If there is a risk that the patient may fall down from the bed the side rails has to be kept at the upper position when the patient is left without monitoring. (danger of falling down and of entrapment when lift support is used)

5.10 Installation of the IV-pole (60121 or 60122)

Install the IV-pole in the collet in the head end of the hospital bed. The pole locks in place when you turn it in collet. Remove IV-pole by pulling upward. You can adjust height of IV-pole from adjustment collar in IV-pole. Maximum safe working load for IV-pole is 2 kg.



Figure 14. IV-pole

IMPORTANT! Check that there is sufficiently room around the bed. When you lift the bed the IV-pole also raises and space requirement above increases.

5.11 Urine bag holder

Raise the backrest. Remove the short mattress platform ABS middle part from the bed. The urine bag holder is fastened by pushing it through the holes on the frame.

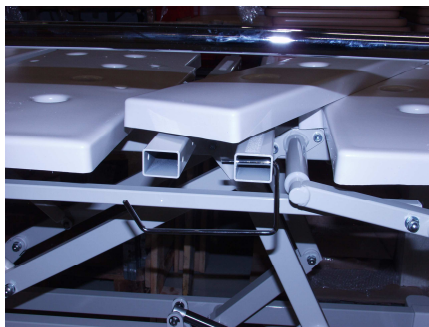


Figure 15. Urine bag holder

5.12 Short frame assembly to ease transport

Salli GPM models have ability shorten the overall length of bed by removing foot and head end part. Before shortening of bed remove side rails and other accessories according instructions. Foot end part is taken out same way in all models by opening hand wheel screws located in both side of frame and removing bed end part.



Figure 16. Remove of end part and bed shorten to transport length

To remove head part, lift backrest up and remove head part by pulling out from both locking knobs at the same time. Lift and pull head part apart from upper frame. Installing is done in opposite way, push head part into matching holes in upper frame and slide it downward until locking knobs will lock head part in place. Secure that head part is completely locked and both locking knobs are into locked position (pushed in).

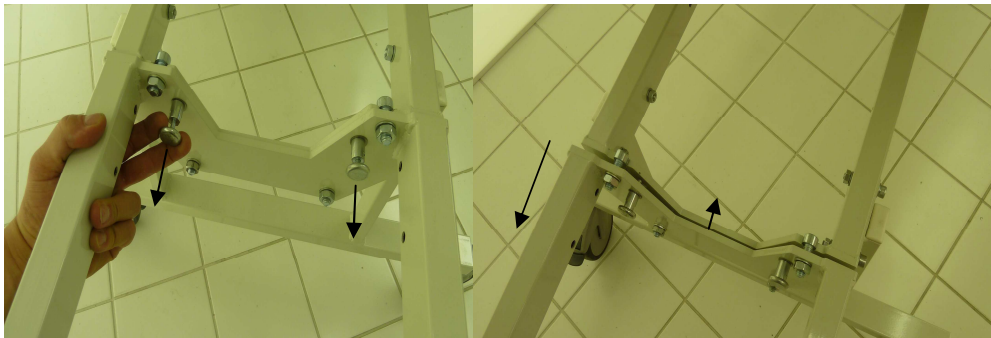


Figure 17. How to remove head part

6 Cleaning and disinfection

Clean and disinfect the metal parts of the hospital bed and the ABS plastic plates with a moist cloth using a mild multipurpose detergent. Follow internal instructions how often and how bed should be cleaned. Obey instructions given by used detergent manufacturer. Recommended daily decontaminated areas and parts are which patient or nurses are touching, side rails, bed ends etc. accessories which are typically handled during patient treatment and when using the bed. An overall cleaning is recommended every time when bed is taken into use or when patient changes or at least once a week.

IMPORTANT! Do not clean the hospital bed with a water jet or mechanically. NO MACHINE WASHING!

IMPORTANT! The disinfectant erodes the surface materials. Wipe the disinfectant off with a moist cloth.

IMPORTANT! Do not use solvents like petrol or alcohol in the cleaning of the hospital bed.

6.1 Detachment of the sleeping platforms

You can detach the ABS sleeping platform plates of the hospital bed for the time of the cleaning. Backrest and foot section parts have Velcro tape connections and can be removed simply by lifting from corner of plate.

Detach the middle platform by lifting. When you put it back, check to set the plate in the correct direction and proper place.

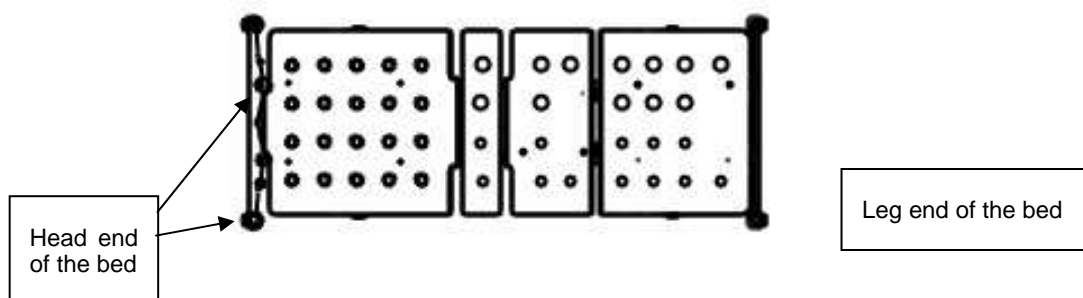


Figure 18. Normal layout of mattress platform ABS parts.

7 Service

Need for service is minor but bed should be maintenance yearly period to ensure safe and proper use. Bed expected service life is at least 10 years in normal use if usage and service is done by manufacturer instructions. Please notice that if manufacturer instructions from use and service are neglected it may effect on service life expectation and may lead avoid product guarantee. For correct disposal of the bed, follow given national instructions and laws considering recycling metal, plastic etc. parts. Consult local dealer or manufacturer if needed.

7.1 User check operations

Check the condition of the following parts every time when bed is taken into use or when patient changes and recommended as a daily routine during normal use:

- Bed rails, locking in highest position, stability
- Bed ends, attachment and stability
- Bed wheel brakes, check for stability and movement
- Check mattress platform adjustment, if and when adjustment is needed

The adjustment of the brakes and other service and repair operations are instructed in a separate service manual and are meant to be done only by professional service personality. If any abnormal behaviour is notice, bed must be taken out of use at once and taken to service for repair.

<p>IMPORTANT! <i>If abnormal behaviour is noticed during normal use, bed should be taken out of use immediately. Do not use bed which is broken or has a malfunction that might influence patient and user safety.</i></p>

7.2 Annual service

The annual service operations are instructed to be done only by professional service people according national laws and requirements. Every person who is involved in service or maintenance should at least read the safety notices and instructions for use to ensure that bed is working properly. Please take notice following step before maintenance of the bed

- Bed should be cleaned and disinfected before and after repair/service work
- Read manuals and check for correct functionality of the bed mechanics
- Always repair or service only unoccupied beds
- Always make notice for done maintenance or repair work in service form
- Use only original spare parts which are proven by manufacturer

7.3 Annual service schedule

Once a year bed should be inspected and serviced to guarantee a safety use of bed. Annual service is mainly carried out by three stage program. Technical and visual inspection, functional testing and some service tasks. Visual inspection should be carried out to check following parts and functionalities in bed.

- Check bed parts and components for any unusual marks, fragment, tear, bending, unusual wearing, welding seam fractures etc.
- Check for any loosen component, loosen bolts, nuts, locking pins etc.
- Repair and replace broken parts if needed

Functional testing should be carried out for following systems.

- Check functionality of all adjustments and accessories, stability and proper fixing, locking functions of systems, take notice for proper function
- Check functionality of side rail, proper locking, stability
- Check bed stability, individual wheel brakes, central brake lock functionality, direction locking of wheel etc.
- Check adjustments for mattress platform, movement in all positions and parts, gas spring and (Rastomat) mechanical adjustment
- Check functionality of trendelenburg if there is one (optional)
- Check functionality of accessories, lifting pole, lift support etc. (optional)

Service

- Lubricate bearings, friction points, hinge connection if you hear noise from mechanical adjustments. Lubricate with normal or aerosol vaseline
- Check again done service work to ensure proper function of bed
- Fill out following annual service report like below. You find a copy in the end of manual section 10 spare parts and diagram

USE FOLLOWING DOCUMENT FOR RECORDING SERVICES WHEN NEEDED														2016 2017 2018 2019 2020 2021 2022 2023 2024 2025															
PRODUCT SERIALNUMBER:	LOKE	2	0	1	5	2	3	0	0	7	x	x	x	KIND OF CHECK	OK/NO OK/NO OK/NO OK/NO OK/NO OK/NO OK/NO OK/NO OK/NO OK/NO														
NAME OF TECHNICIAN:	Y/MTH	1	2	3	4	5	6	7	8	9	10	11	12	MECHANICAL INSPECTION	OK														
Lojer service/T.T 20.4	2016				x									MATTRESS PLATFORM	OK														
	2017													MATTRESS PLATFORM SUPPORTS	OK														
	2018													SUBFRAME, SUPPORT PARTS	OK														
	2019													ATTACHMENTS, BOLTS, PINS etc.	OK/NO														
	2020													INDIVIDUAL COMPONENTS	OK														
	2021													FUNCTIONAL CHECKING	OK														
	2022													HEIGHT/PLATFORM ADJUSTMENT	OK														
	2023													SIDERAIL AND ASSECCORIES	OK														
	2024													TRANSPORT / BRAKE STABILITY	OK														
	2025													CLEANING	OK														
ATTENTION, CHANGED PARTS etc. : Replaced bed end wheelhand nut																													

8 Fault detection

In order to purchase spare parts please contact the Lojer sales (please see *Chapter 14 Contact information*). Before contacting us, please ensure that you have the following information available:

- Product name and model
- Serial number
- Purchase year
- Accurate description of the problem.

The product name, model, serial number and manufacture date can be found on the type plate (please see chapter 9.1, figure 16 *Type plate*) from lower frame at the headend of the H-models and in the upper frame F-models.

More detailed service instructions can be found in the separate service manual (please see *Chapter 0 References*).

9 Technical specifications

Width	80 cm or 90 cm
Total width	90 cm or 100 cm (with side rails)
Length	222 cm (177cm, short frame transport length)
Mattress measure	78 cm or 88 cm x 205 cm x 13 cm
Weight of a bed	H-models 98-116 kg (depending width, accessories) F-models 60-86 kg (depending width, accessories)
Safe Working Load	170 kg / 135 kg max. patient weight
Adjustment of height	46–81cm (125mm castors), 49-84cm (150mm castors)
Height of F-models	56cm (125mm castors)
Transport temperature	-5 - + 60 °C, moisture 30-75 %
Storage temperature	-5 - + 60 °C, moisture 30-75 %
Operating temperature	+10 - + 40 °C, moisture 30-75 %
Mattress size	Width 78/88 cm (80/90 cm beds), length 205 cm, normal height max. 13 cm, with raised rails 18 cm or 22 cm. See chapter 5.7

9.1 Data of the type plate and markings on the bed

CE

A product meets the requirements of directive 93/42/EEC



Figure 19. Type plate,

The type plate is located at the front of the lower frame of the hospital bed H-models and in the upper frame side tube F models.

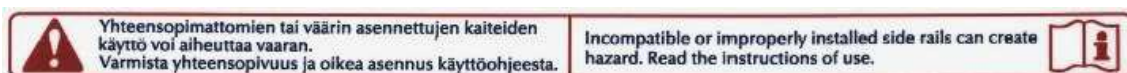


Figure 20. Warning for use or assembly of incompatible

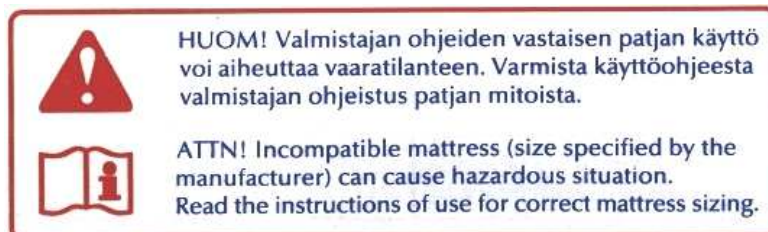


Figure 21. Instructions for mattress specification

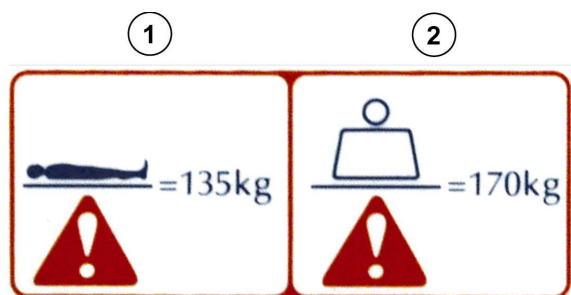


Figure 22. Safe working load: 1 max. patient weight, 2 safe working load



Figure 23. Warning about risk of crushing and entrapment



Figure 24. Warning, information must always be read and strictly adhered to



Figure 25. Observe the information in instructions for use



Figure 26. Information marked with this symbol must always be read and strictly observed



Figure 27. Warning notice on sitting/standing in the end of bed, hazard area see figure below

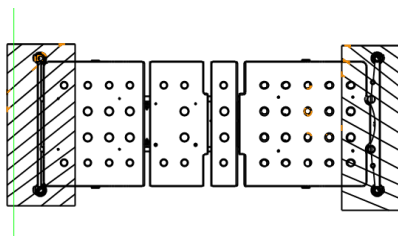


Figure 28. Hazard area on mattress platform

9.2 Standards used

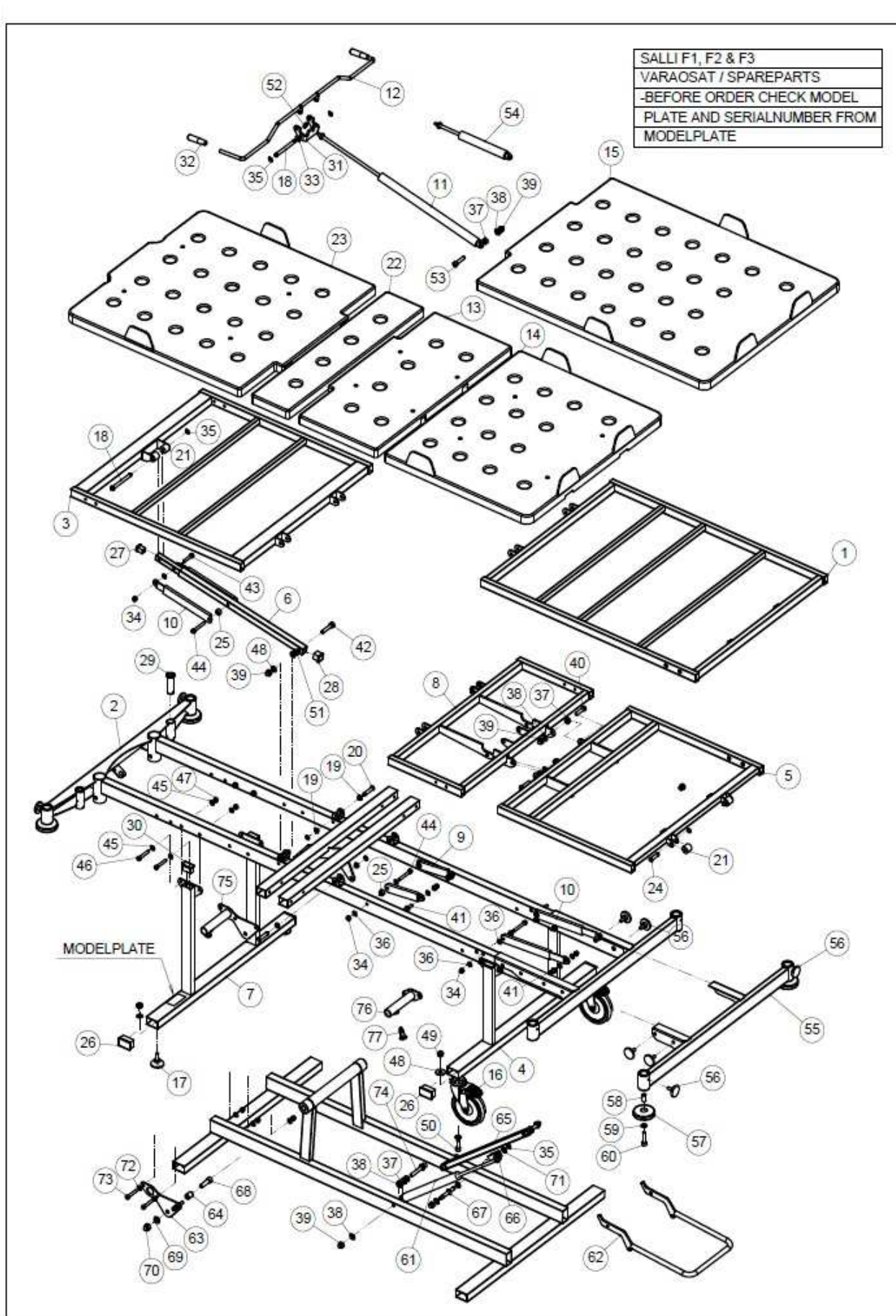
Lojer Salli hospital beds meet the requirements of directive 93/42/ETY (medical devices) and its amendments.

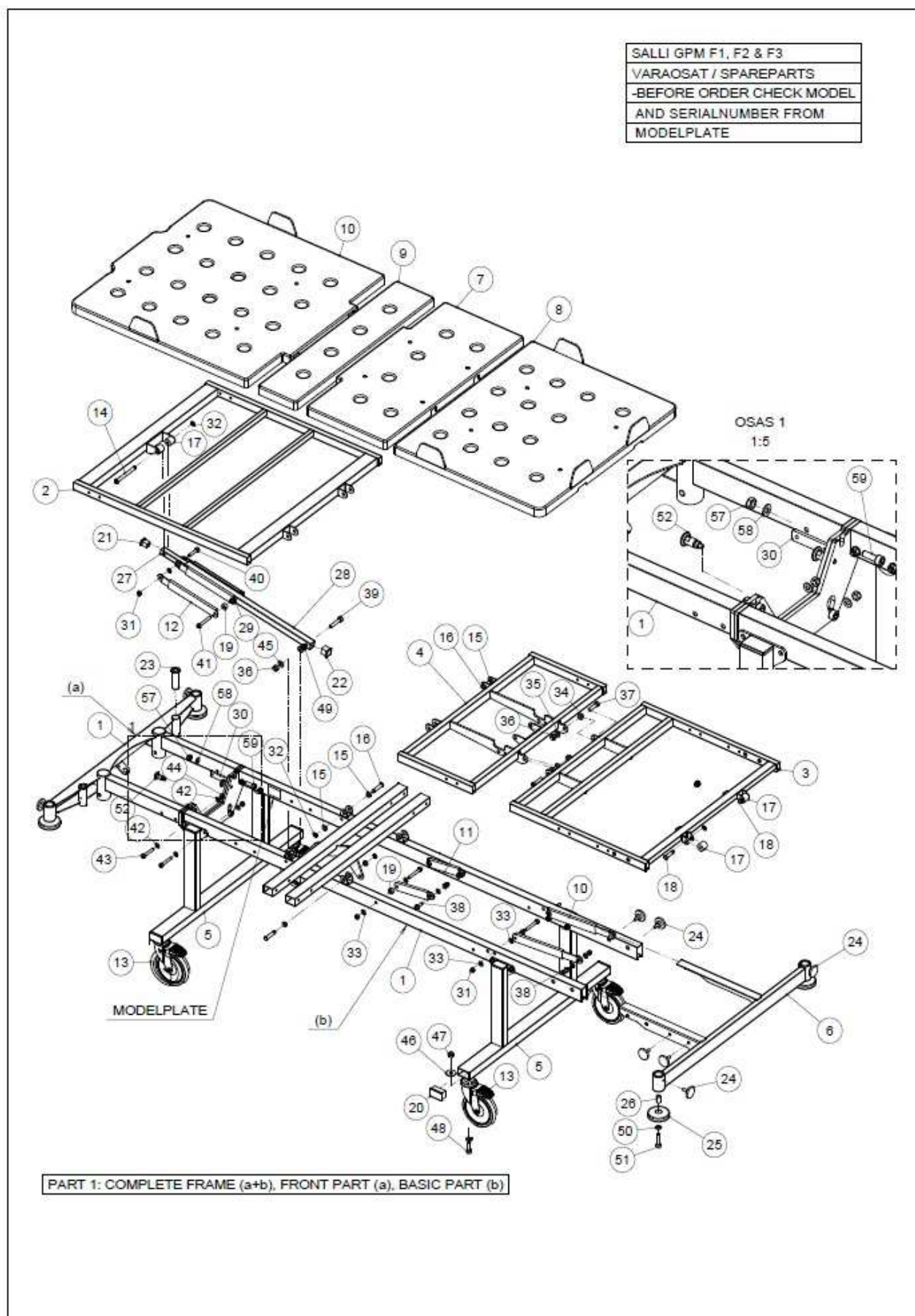
The following unified standards have been adapted in the design and testing of the bed models:

- EN 60601-1: 2005
- EN 60601-2-52

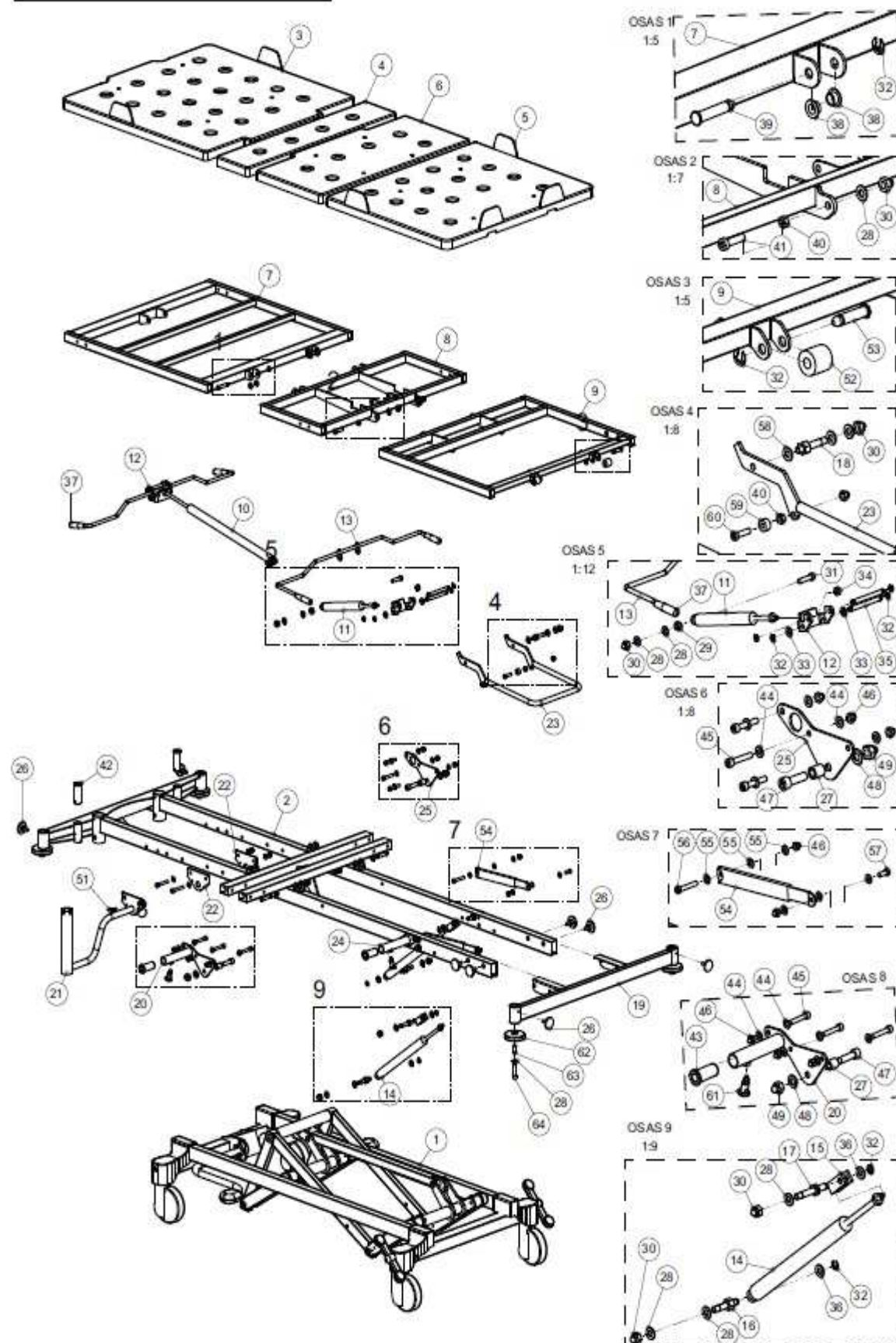
10 Spare parts and diagrams

See following diagram for spare part order. Use diagram to find out needed part. For ordering spare part check the serial number located in model/type plate in bed frame. Don't hesitate to take contact for consulting correct part, see contact information chapter 11.



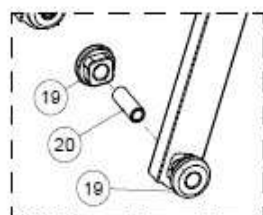
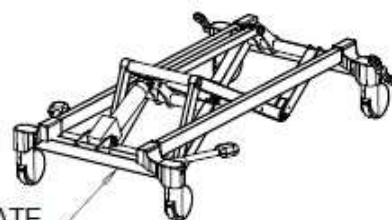


1332SALLIH4-80 PERUSKP

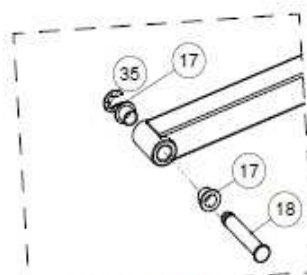
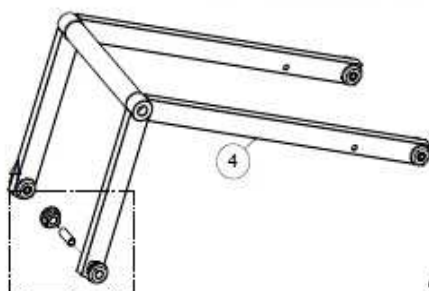


HYDR. ALARUNKO 1332 / HYDRAULIC SUBFRAME 1332
TARKISTA MALLI / SRJNUMERO ENNEN VARAOSIEN
TILAUSTA
CHECK MODEL AND SERIALNUMBER BEFORE ORDERING
SPAREPARTS

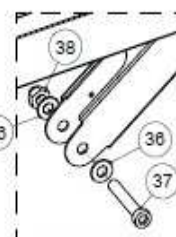
TYYPPIKILPI / MODELPLATE



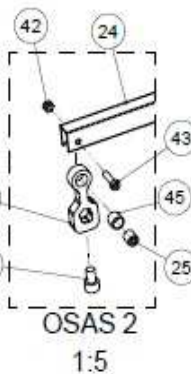
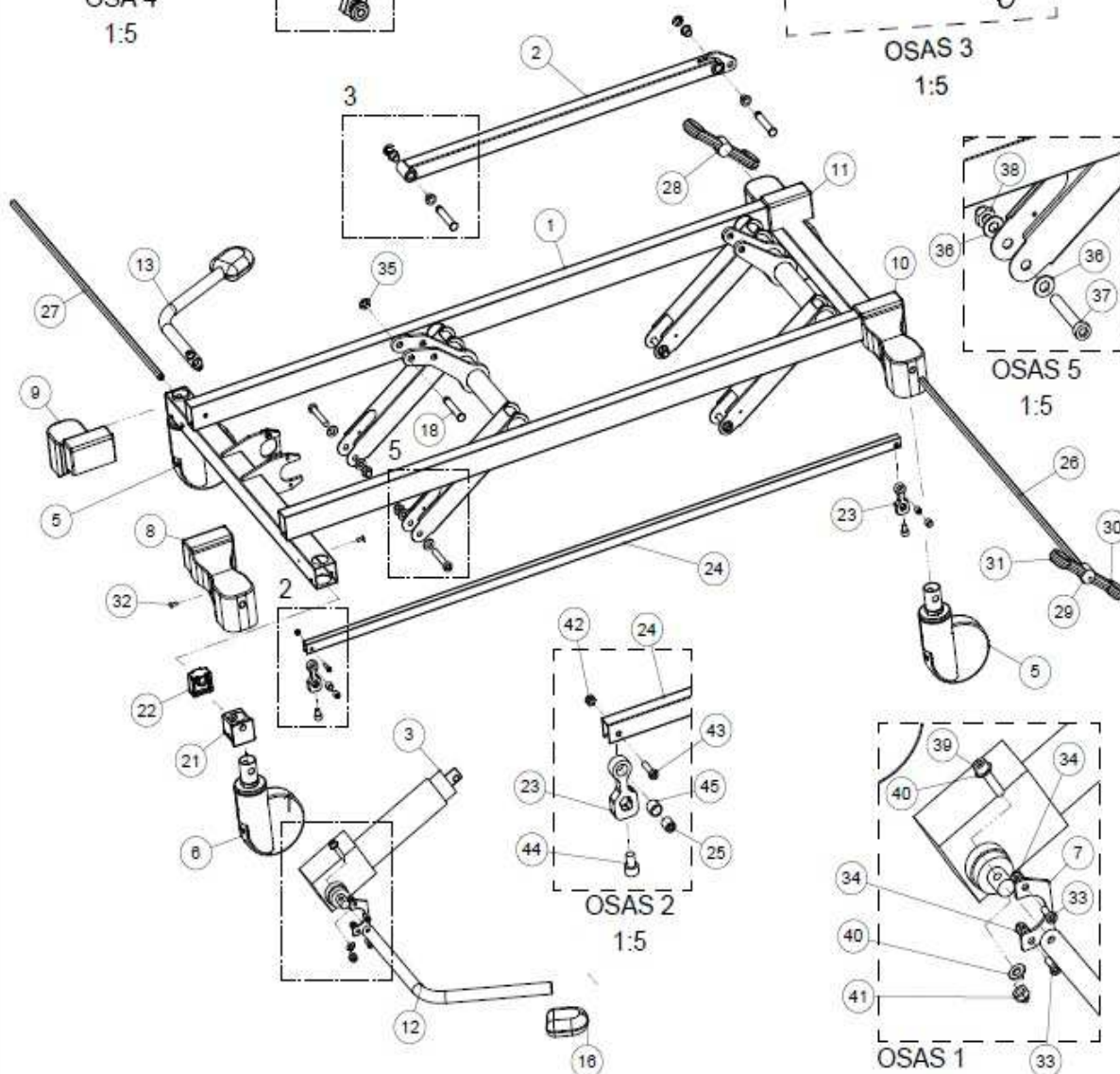
OSA 4
1:5



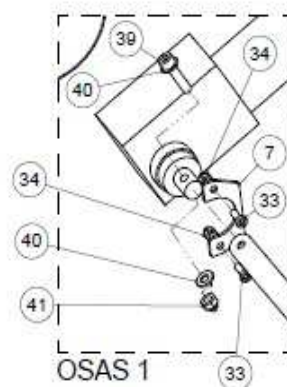
OSAS 3
1:5



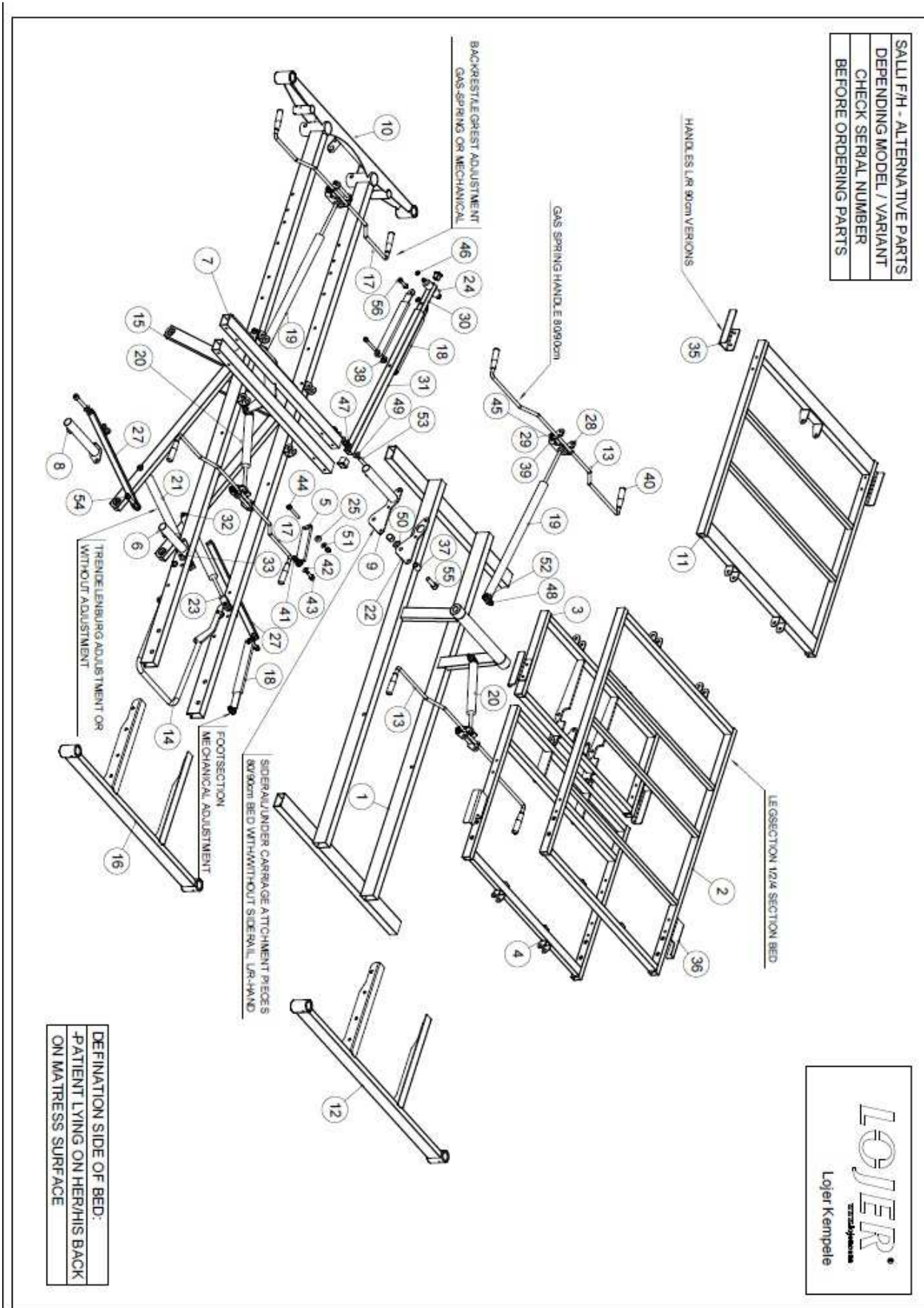
OSAS 5
1:5



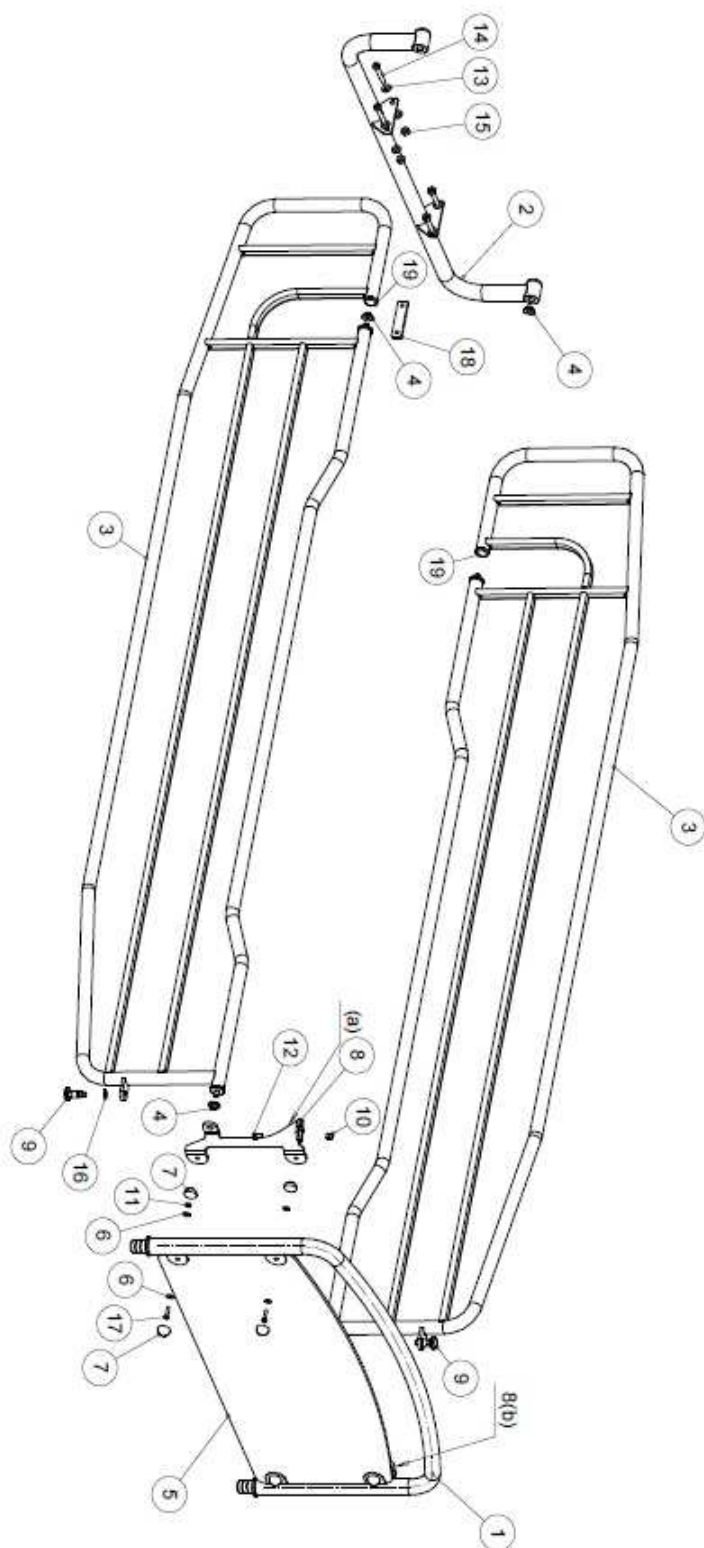
OSAS 2
1:5



OSAS 1
1:5

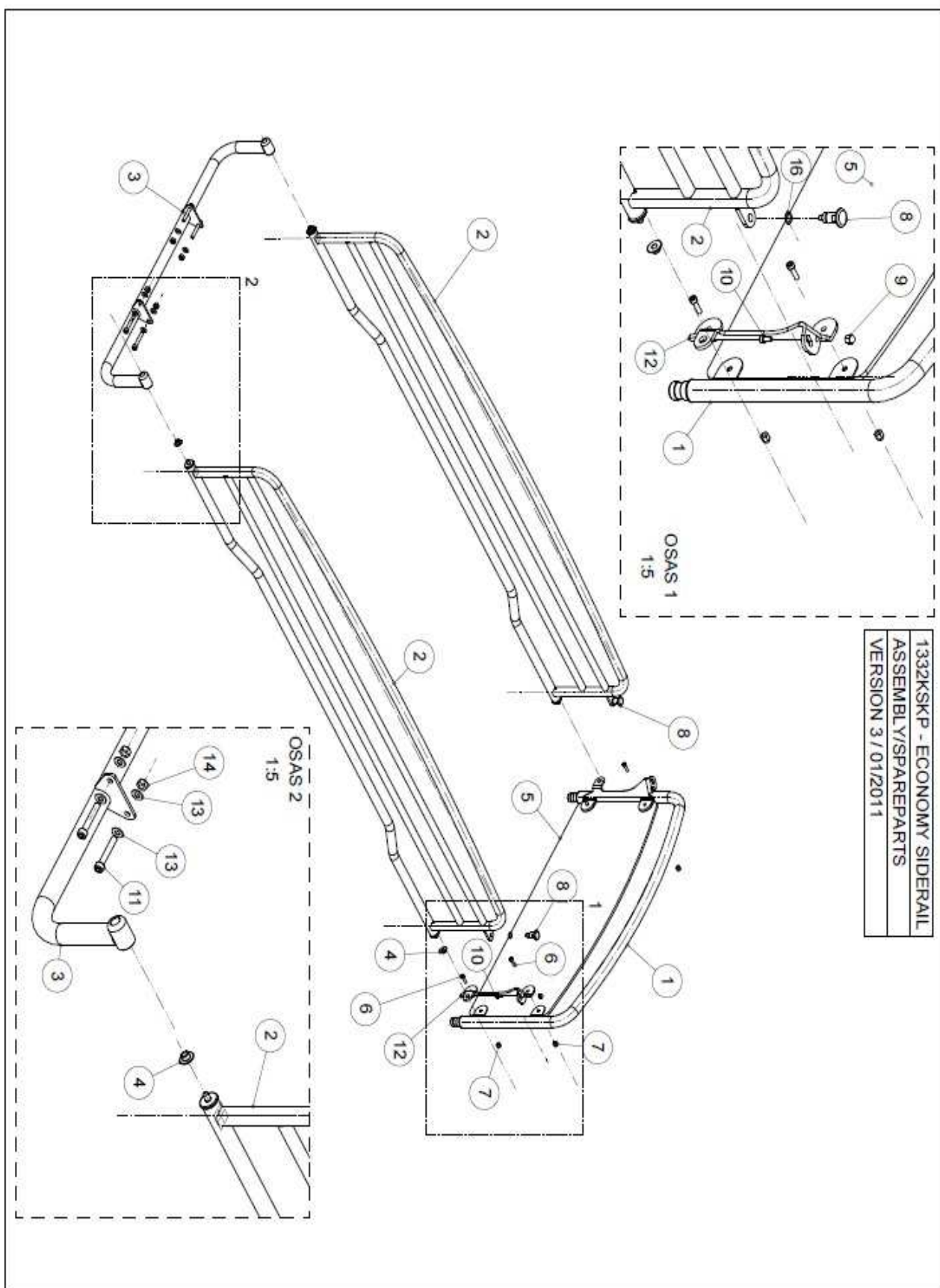


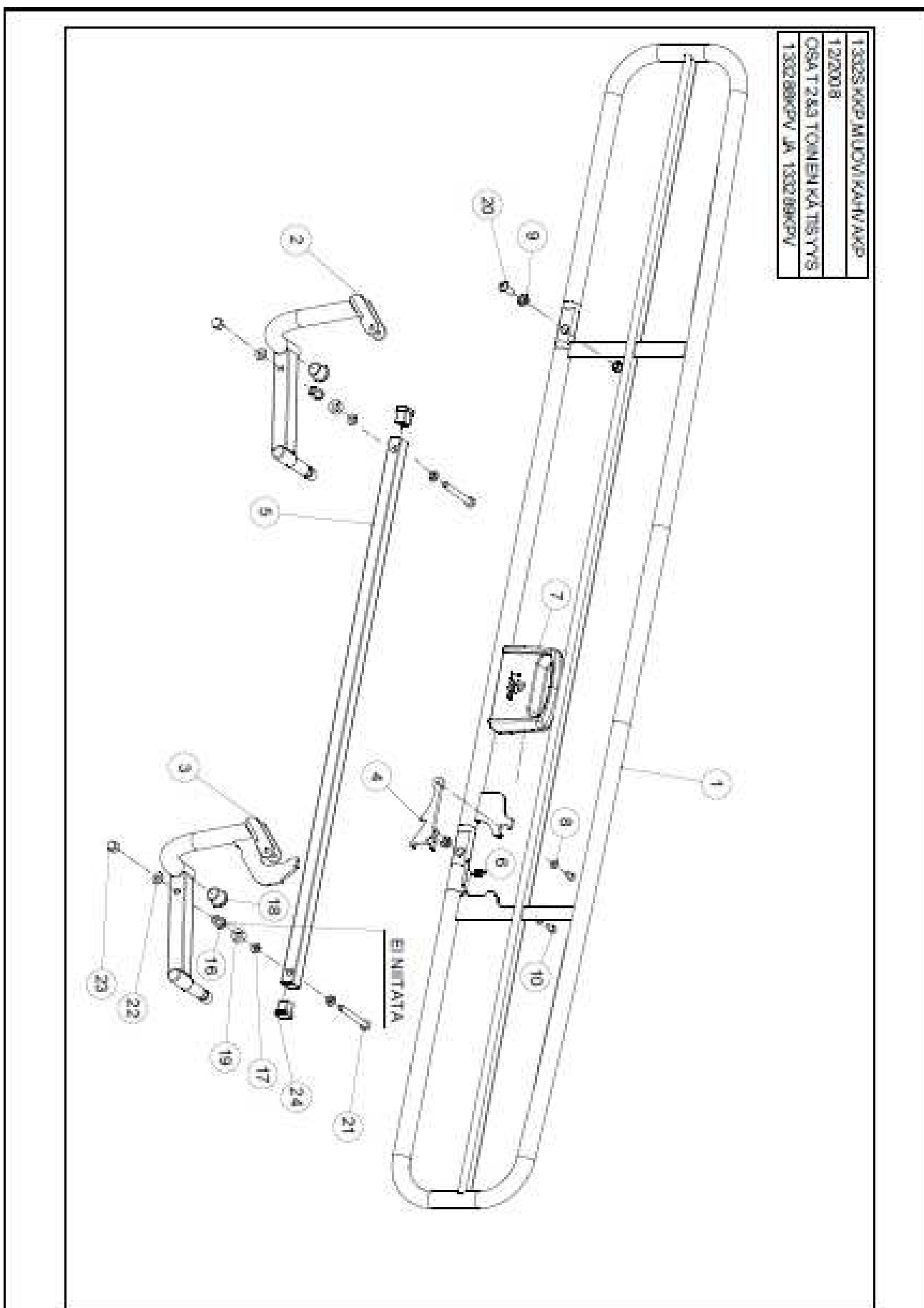
70524KP - FULL LENGTH SIDERAIL VERSION
TÄYSPITKÄ EKOKAIDE VERSIO 09/2015



LOJER
KEMPELE
Lojer Kempele

PART 1: CHECK WIDTH 80 or 90cm VERSION
STRAIGHT OR CURVED VERSIONS
PAINTED OR CHROMED
PART 2: CHECK WIDTH 80 CM OR 90 CM
80cm - 1332HKEP
90cm - 13329HKEP
PART 3: CHECK, CHROMED OR PAINTED
PART 8: CHECK, RIGHT HAND 8(a), LEFT HAND 8(b)





33

11 Contact information and references

Manufacturer

Lojer Oy
Putajantie 42
38210 Sastamala
Tel. 010 830 6700
Fax. 010 830 6702
Email: firstname.lastname@lojer.com
www.lojer.com

Service

Tel. 010 830 6750
Email: service@lojer.com
www.lojer.com/huolto

Sales

Tel. 010 830 6700
Email: firstname.lastname@lojer.com

References

ScanAfia PRO S 2, S 4, TK 2 and TK 4 Hospital bed Service manual
Salli F,H and F/H GPM model quick instructions