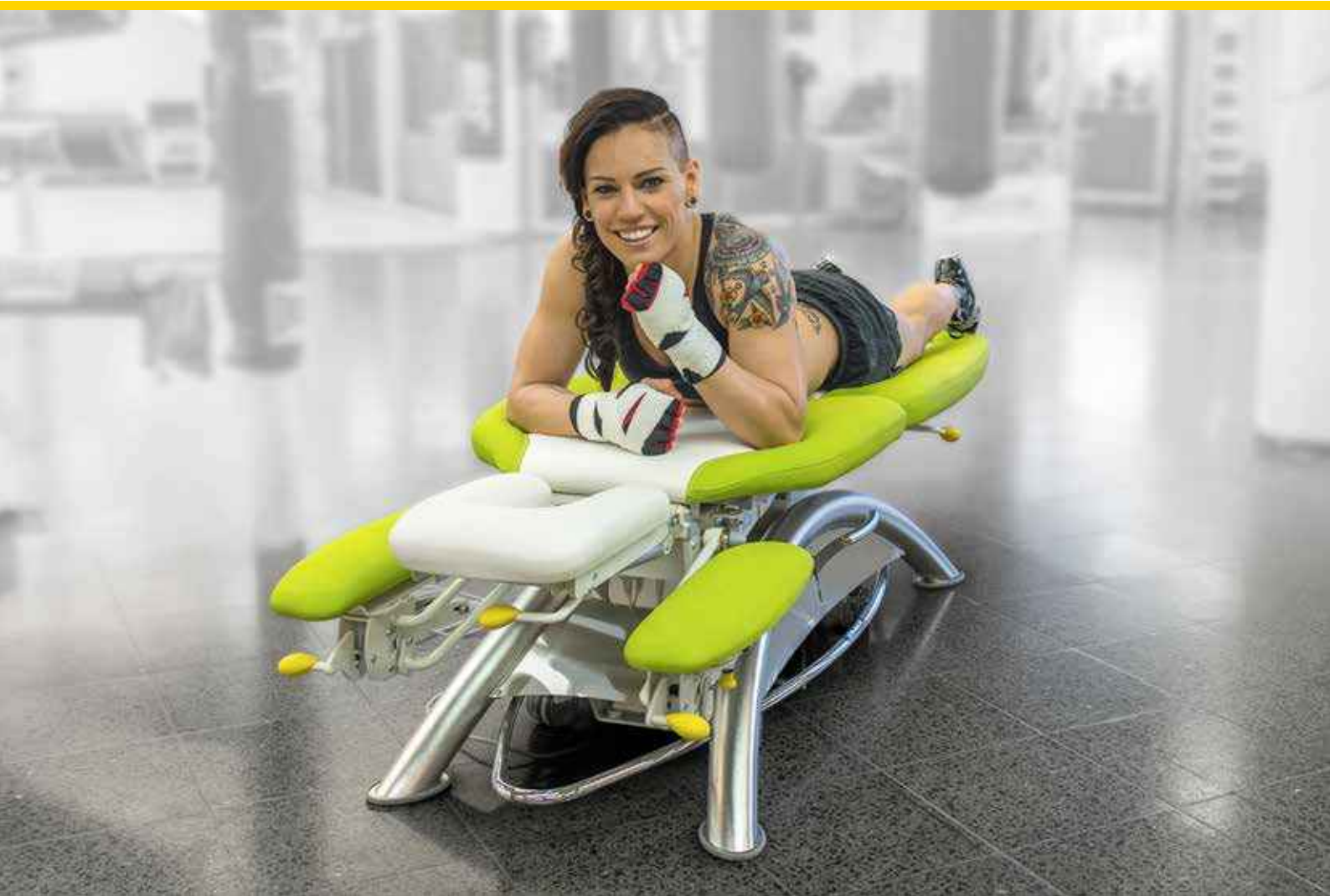
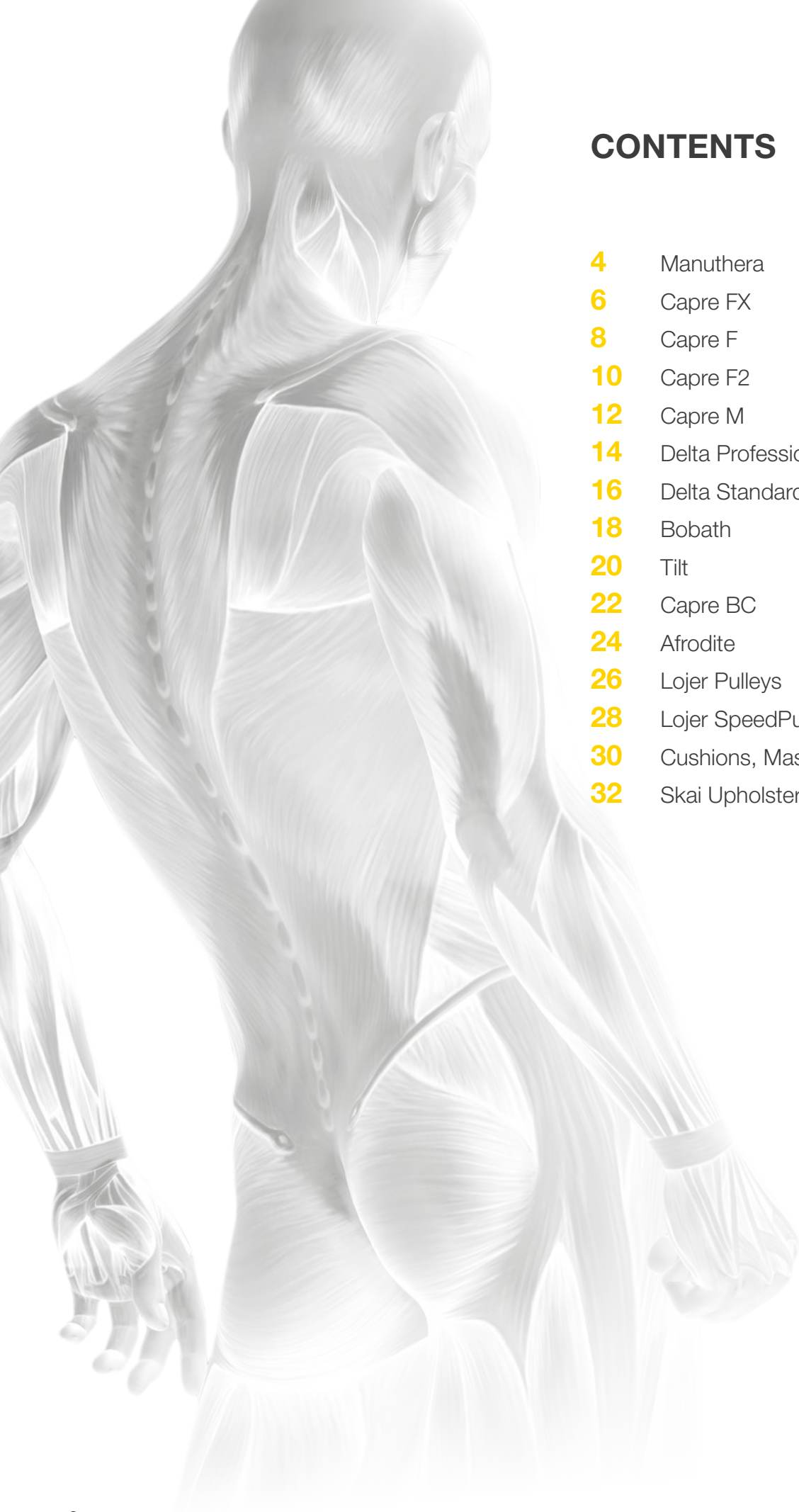


Medical Wellness





CONTENTS

4	Manuthera
6	Capre FX
8	Capre F
10	Capre F2
12	Capre M
14	Delta Professional
16	Delta Standard
18	Bobath
20	Tilt
22	Capre BC
24	Afrodite
26	Lojer Pulleys
28	Lojer SpeedPulleys
30	Cushions, Massage Oils and Creams
32	Skai Upholstery

Own Production and Export to Over 100 Countries

Manufactured in Finland

The steel parts of Lojer's products are made using Finnish raw materials. The company manufactures its own components for its products, and all Lojer products are manufactured entirely in Finland; in fact, Lojer is the only Finnish medical equipment manufacturer to be awarded the Finnish Flag symbol for Finnish workmanship.

Sustainability

Care for the environment has been a key consideration for Lojer for decades, and the company is committed to the continuous development of its environmental policies. Lojer's commitment to recycling can be seen for example in that 100% of its aluminium waste is recycled in the company's own foundry. All Lojer products are manufactured using certified electricity from renewable sources.

Lojer products are CE-marked medical equipment and are developed, tested and manufactured according to ISO9001 and ISO13485 standards. Other manufacturers' products marketed by Lojer have also been tested. Most products fulfil the MDD requirements and are CE-marked medical devices.

HygTech Alliance

Lojer is a member of the Finnish HygTech Alliance, whose companies together offer a comprehensive range of antimicrobial solutions for public places. We are able to supply all surfaces as antimicrobial, significantly lessening the growth and spread of bacteria.

Life Cycle Services

Lojer's life cycle services work flexibly with the customers' needs. They make it easier for care staff to concentrate on the most important thing: caring for their patients and customers. Service agreements are tailored to the customer's needs and wishes, with anything from occasional service and repair needs to Lojer taking full responsibility for supply and maintenance of equipment.

Full service leasing

Lojer's full service leasing concept presents a new way of thinking: it guarantees a hospital or care facility quality, safe and functional equipment at all times. Responsibility for the ownership, functionality and maintenance of equipment rests with Lojer; the customer gets a working facility with modern equipment, which the manufacturer maintains and services regularly. Lojer is also happy to take over responsibility for the ownership and maintenance of customers' old equipment.

Spare Parts

Lojer has decades of experience and expertise in medical equipment. As a result, the company's spare parts services can supply parts even for equipment that is 20-30 years old. Our fast service and own factories in Finland mean that parts are dispatched quickly from our own logistics centre, many times even with next day delivery.

We offer service training to our distributors!

Watch a video of Lojer's manufacturing facilities <http://bit.ly/lojerfactory>



Manuthera® 242

Manuthera 242 is an all-in-one treatment table for demanding examination and treatment use by various manual therapists, such as sports massage therapists, naprapaths, osteopaths, OMT and physical therapists and chiropractors. Manuthera 242 takes the therapist's work to a new level and supports countless treatment and diagnosis methods thanks to its patented operation system based on two synchronised motors, unique multi-traction features and various other functionalities, as well as its structure.

The patient can be moved to therapeutic and anatomical key positions smoothly and quietly. Mobility treatment can be carried out 3-dimensionally using the traction, flexion, lateral flexion and rotation features of the table, as well as gravity. The table design, twin motor system and the frame with bearings in all moving parts enhance the ergonomics of the therapist's work and make it less burdening, which enables even better treatment results.

Face section folding two ways

and featuring advanced 3D functionalities for the safe mobilisation of the cervical spine and neck through vertical and lateral head movement.

Two-piece **thorax section** element for vertical thorax bending and a 3D rotational motion. A unique tool for thorax mobilisation and manipulation!

Lower body section with extension / flexion, lateral movement and 3D rotational motion. Lower body rotation feature.

Arm rests with stepless height adjustment and lateral movement. The arm rests can be attached to the side to function as side support.

Easy-to-use, sturdy and ergonomic **knobs** for locking the movement to the desired position.

Safety edge stops all table adjustments from being touched.

Adjustable **legs** with support paws.

Extremely wide range of **Hi-Lo adjustment**.

Lockable castors for easy mobility.

Electronic Tilt up / Tilt down function for gravity-based treatment; also enabling easier access for patients onto the table. Spinal decompression has never been this efficient and pleasant for the patient!



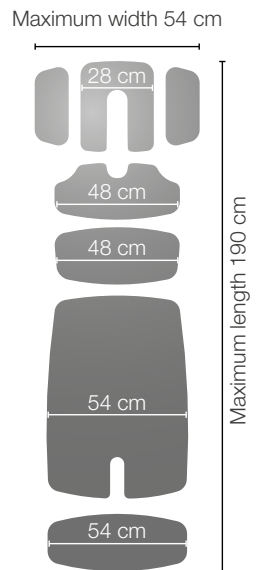
Check our product video <https://url.fi/Nd0>

Manuthera 242

Thorax section elements	2
Height adjustment (Hi-Lo)	49–105 cm
Weight	170 kg
Tilt Down function (face section down)	Electronic
Tilt Up function (face section up)	Electronic
Lower body rotation	•
Total lock function for upper body	•
Total lock function for lower body	•
Castors	2
Safe working load (SWL)	150 kg
Lifting motors (push only*)	2
Drop functions	Normal drop and traction drop
Automatic anti-squeeze safety function	•
Safety edge (movement stop)	•
Adjustable legs and paws	•
Safety lock functions	Automatic (2 h) or by pressing down High/Low pedal three times
Activating safety lock functions	Double click up the High/Low pedal
Lying surface	Soft moulded
U-shaped face element	•
Breathing hole cover	•
Country of manufacture	Finland

Explanation of markings: • =standard feature

* Motor push to lift, gravitational lowering



Multi-position foot section: upright position, footrest when lying down, and stepping board function.



Easy-care, durable, bio-compatible **soft moulded bed.**

Drop function.

New technology: traction drop, which enables easier and more diverse hip area manipulation.



Front and back **Total lock supports** provide additional support for burdening treatment techniques and make the table very sturdy in every section.



Patent
US 9,642,761 B2

FENNIAPRIZE 17
HONOURABLE MENTION

Capre FX Treatment table

The Lojer Capre FX is an outstanding treatment table, whose design and features meet or exceed the needs of even the most demanding users. Its anatomically shaped two-colour upholstery supports the patient, and the elegant design also makes the Lojer Capre FX a fine interior decoration element.

The silent Lojer Capre FX takes up very little space, thanks to its two pillars by means of which it can be lifted straight up. The table can also be used in the chair position, thanks to the design of the lower frame, while versatile adjustments, such as side-foldable armrests, make work easier. The stepless adjustable extension and flexion angle of the foot section and multiple height settings help patients get on and off the table.

Design your own outstanding table at capre.lojer.com



Scan the QR code to see
the product video
<https://youtu.be/w2747nJPovE>



FX Designer: Create your own
table with this handy tool!

Technical specifications

Table width	55,65,75 cm
Overall length	202 cm
Height adjustment range	48..88 cm
Foot section adjustment	+70°..-12°
Safe Working Load (SWL)	250 kg
CE-marked	Yes
Warranty	2/10 years
Country of Manufacture	Finland

Features

Three or five sections

Arm rests can be turned to side supports (only FX5)

Electric height adjustment

Head section either oval or U-shape

Foot section extension and flexion +70°/-12°

Central locking designed casters Ø75 mm

Electrical table top height adjustment with 360°-foot bar

Possibility to use infrared hi-low control

Design packages: 5 design alternatives in addition to the basic model
(use configurator to design your own table)

Two-coloured anatomic upholstery:

Multiple upholstery colors and several high-quality upholstery materials available
like Skai Fashion (16 options), Skai Clinica (3 options), Nature (5 options)

Accessories

Double-hinged head support

Drainage with gas spring

Drainage with electric adjustment

Wireless height adjustment control (IR)

Conventional upholstery (non-anatomic, same as in Capre F5)

Design packages (choice of 5)

Paper roll holder (50 or 60 cm)

Fixation support, pelvic

Fixation support, shoulder

Battery operation



Double hinged face section

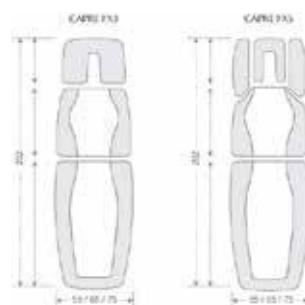


Drainage position



Chair position

Upholstery options



Capre F Treatment table

The modifiability, adjustability and silent operation of the sturdy Lojer Capre F improve functionality and enhance the comfort of use. Its multiple height settings, easy-to-use armrests and side supports, the stepless adjustable extension and flexion angle of the foot section improve the ergonomics and efficiency of the work being carried out.

All Lojer Capre treatment tables come with high-quality, durable SKAI upholstery.

Versatility for physiotherapists



**Lojer Capre F5
with optional accessories**



Capre F5 fully adjustable
arm rests



Capre F3/F5 the stepless
adjustable extension and
flexion angle of the footsection



Drainage with gas spring
or electric motor



Side supports with fast locking
and horizontal adjustment

Technical specifications

Table width	50,55,60,65,75 cm
Overall length	202 cm
Height adjustment range	45..92 cm (electric) or 49..90 cm (hydraulic)
Foot section adjustment range	+70°..-12°
Head support adjustment range	+35°..-90°
Arm support adjustment range (F5)	34 cm
Arm support angle adjustment (F5)	50°
Total weight	95 kg
Safe Working Load (SWL)	210 kg
Electrical system	24V
CE-marked	Yes
Warranty	2/10 years
Country of Manufacture	Finland

Features

Three or five sections

Very low minimum height: Electric height adjustment 45–92 cm or hydraulic adjustment 49-90 cm

Stepless arm supports featuring quick adjustment with gas springs (only F5),

anatomic upholstery supports the arm of the patient

Stepless head section with gas spring adjustment

Oval shape or U-shape head section

Unique safety feature of arm rests

Hidden 24 V safety actuator, downward movement with gravity force only

Optional safety switch (on/off) for the mains powers

Stepless foot section extension and flexion +70°/-12°

Foot pedal for height adjustment (hydraulic or electric)

Multiple upholstery colors and several high-quality upholstery materials available:

Skai Fashion (16 options), Skai Clinica (3 options), Nature (5 options)

Accessories

Side supports with fast locking and horizontal adjustment in three positions

Double hinged head support

Centrally locking casters (Ø75mm)

Drainage with gas spring

Drainage with electric adjustment

Additional hand control or foot pedal

Anatomic designed upholstery

Electrical table top height adjustment with 360°-foot bar

Turning arm rest (can be turned to side supports)

Paper roll holder (50 or 60 cm)

Battery operation

Upholstery options



F3

F5

F5

Check out the new feature
videos of Capre:
<http://bit.ly/caprefeatures>



Capre F2 Treatment table

The modifiability, adjustability and silent operation of the sturdy Lojer Capre F improve functionality and enhance the comfort of use. The Lojer Capre F2 features a two-piece table top. Table is designed for basic treatments and examination.

All Lojer Capre treatment tables have a wide range of upholstery colors and several high-quality upholstery materials to choose from. It is easy to keep the table clean, thanks to its straight surfaces and encased motor.

High quality table for basic treatments and examination.



Paper roll holder



Face hole cover



Hand control

Technical specifications

Total width	65, 70, 80 cm
Total length	196 cm
Height adjustments	45-92 cm
Back section length	68 cm
Back section adjustment	0-78°
Total weight	95 kg
Safe working Load (SWL)	210 kg
Electric system	24V
CE -marking	Yes
Warranty	2 years
Country of origin	Finland

Features

Modern design

Table stands firmly on its own feet when in use

Rubber feet don't mark the floor, floor level adjustment

Height adjustment with hand control

Electric back section adjustment with hand control

Clean lines and covered motor make keeping the table clean easy

Multiple upholstery colors and several high-quality upholstery materials available:

Skai Fashion (16 options), Skai Clinica (3 options), Nature (5 options)

Accessories

Battery use

360° height adjustment foot bar

Foot pedal for height adjustment

Paper roll holder

Face hole cover

Casters Ø75 mm

Capre M Treatment table

The sturdy, easy-to-use Lojer Capre M is a refreshing addition to the range of basic treatment tables in terms of its design and colour alternatives. Specifically intended for masseurs, the electrical Lojer Capre M has the best price-quality ratio on the market.

All Lojer Capre treatment tables have high-quality, durable SKAI upholstery. It is easy to keep the table clean, thanks to its straight surfaces and encased motor.

A design alternative for a basic treatment table



Capre M4 fully adjustable arm rests



Side supports with fast locking and horizontal adjustment



Head section, oval shaped



Central locking castors, 360° foot bar

Technical specifications

Table width	55,60,65,80 cm
Overall length	202 cm
Height adjustment range	45..92 cm (electric) tai 49..90 cm (hydraulic)
Head support adjustment range	+35°..-90°
Arm support adjustment range (M4)	34 cm
Arm support angle adjustment (M4)	50°
Total weight	95 kg
Safe Working Load (SWL)	210 kg
Electrical system	24V
CE-marked	Yes
Warranty	2/10 years
Country of Manufacture	Finland

Features

Two or four sections
Stepless quick adjustment of arm supports with gas springs (only M4), anatomic upholstery supports the arm of the patient
Stepless adjustment of head section with gas spring
Oval shape or U-shape head section
Unique safety feature of arm rests
Hidden 24 V safety actuator, downward movement with gravity force only
Height adjustment with foot pedal
Optional safety switch (on/off) for the mains power
Multiple upholstery colors and several high-quality upholstery materials available:
Skai Fashion (16 options) Skai Clinica (3 options), Nature (5 options)

Accessories

Side supports with fast locking and horizontal adjustment in three positions
Double hinged head support
Centrally locking castors (Ø75mm)
Additional hand control or foot pedal
Electrical table top height adjustment with 360°-foot bar
Paper roll holder (50 or 60 cm)
Battery operation

Upholstery options



Check out the new Capre product
video: <http://bit.ly/capre2nd>



Delta Professional Treatment table

This classic massage table has been the favourite of masseurs for a long time. Delta Professional Treatment tables represent the best in their field, both in terms of function and durability. Our many years of experience can be seen in the design of our tables, ensuring stability and durability at all working heights and positions.

Excellent Value for Money



**Delta Professional DP5 Massage table
with castors and pair of side supports**

Delta Professional

	DP2	DP3	DP 4	DP5
Sections	2	3	4	5
Width, 50, 55 or 60 cm	•	•	•	•
Width, 70 cm (side supports cannot be used)	•	-	•	-
Length, 195 cm	•	•	•	•
Weight, kg	75	76	76	78
Height adjustments, cm	47 -98	48 -100	47 - 98	48 - 100
Hydraulic height adjustment	-	-	-	-
Safe working load (SWL), 200kg	•	•	•	•
Foot section adjustment range	-	0 - 75°	-	0 - 75°
Middle section adjustment range	-	60°	-	60°
Electric drainage and foot section adjustment	-	option	-	option
Centrally lockable castors	option	option	option	option
Side supports	option	option	option	option
360° height adjustment foot bar	option	option	option	option
Double-hinged face section	option	option	option	option
Hand controller	option	option	option	option
Foot controller	option	option	option	option
Foot switch support	option	option	option	option
Paper roll holder	option	option	option	option
Safety switch to prevent accidental use	option	option	option	option
Upholstery SKAI Fashion (16 options)	•	•	•	•
Upholstery SKAI Clinica (3 options)	option	option	option	option
Upholstery Nature (5 options)	option	option	option	option
Electrical system, 230 V	•	•	•	•
CE-marking	•	•	•	•
Warranty 2 years	•	•	•	•
Country of Origin	Finland	Finland	Finland	Finland

Explanation of markings: • =standard feature option =optional accessory - =not available



360° height adjustment foot bar



Double-hinged face section



Side supports

Delta Standard Treatment table

This classic massage table has been the favourite of masseurs for a long time. Delta Standard massage tables represent high quality, great functions and durability. Our many years of experience can be seen in the table's features that fulfil the needs of demanding users.

Functional, stable and durable.



**Delta Standard DS4 Treatment table
with castors and ankle cushion**

Delta Standard

	DS2	DS2H	DS3	DS3H	DS4	DS4H	DS5	DS5H
Sections	2	2	3	3	4	4	5	5
Width, 50, 55 or 60 cm	•	•	•	•	•	•	•	•
Width, 70 cm (side supports cannot be used)	•	•	-	-	•	•	-	-
Length, 195 cm	•	•	•	•	•	•	•	•
Weight, kg	60	60	61	61	62	62	64	64
Height adjustments, cm	57 - 87	57 - 87	58 - 89	58 - 89	57 - 87	57 - 87	58 - 89	58 - 89
Hydraulic height adjustment	-	•	-	•	-	•	-	•
Safe working load (SWL), 200kg	•	•	•	•	•	•	•	•
Foot section adjustment range	-	-	0 - 70°	0 - 70°	-	-	0 - 70°	0 - 70°
Middle section adjustment range	-	-	60°	60°	-	-	60°	60°
Electric drainage and foot section adjustment	-	-	option	-	-	-	option	-
Centrally lockable castors	option	option	option	option	option	option	option	option
Side supports	option	option	option	option	option	option	option	option
360° height adjustment foot bar	option	-	option	-	option	-	option	-
Double-hinged face section	option	option	option	option	option	option	option	option
Hand controller	option	-	option	-	option	-	option	-
Foot controller	option	-	option	-	option	-	option	-
Foot switch support	option	-	option	-	option	-	option	-
Paper roll holder	option	option	option	option	option	option	option	option
Safety switch to prevent accidental use	option	-	option	-	option	-	option	-
Upholstery SKAI Fashion (16 options)	•	•	•	•	•	•	•	•
Upholstery SKAI Clinica (3 options)	option	option	option	option	option	option	option	option
Upholstery Nature (5 options)	option	option	option	option	option	option	option	option
Electrical system, 230 V	•	-	•	-	•	-	•	-
CE-marking	•	•	•	•	•	•	•	•
Warranty 2 years	•	•	•	•	•	•	•	•
Country of Origin	Finland	Finland	Finland	Finland	Finland	Finland	Finland	Finland

Explanation of markings: • =standard feature option =optional accessory - =not available



360° height adjustment foot bar



Double-hinged face section



Side supports

Bobath Mat table

Lojer Bobath mat treatment tables are designed primarily for neurological therapy and Bobath therapy. The tables are extremely sturdy and designed in such a way that the therapist can be on the table at the same time as the patient being treated. The table top is upholstered to a high standard and the sides are strengthened with plastic edging. A two-part table top with gas spring assisted, adjustable head section is available as an option.

The construction of Lojer's Bobath table is extremely sturdy requiring very little maintenance; all the moving joints, for example, feature maintenance-free sealed bearings. The mat table features electrically operated height adjustment between 44-88 cm and individually lockable 125 mm castors. The table offers high ground clearance, so a patient lift can fit under it easily.

A Wide Treatment Table for Neurological Therapy



**Bobath Mat table with
two part table top (optional)**

Technical specifications

Table size (width x height)	105 x 200, 120 x 200, 140 x 200 cm
Height adjustment range	44..88 cm
Back section adjustment range (option)	0..75°
Casters	Ø125 mm
Safe Working Load (SWL)	250 kg
Total weight	92 kg (120 x 200 cm)
Electrical system	230 V
CE-marked	Yes
Warranty	2/10 years
Country of Manufacture	Finland

Features

One-part table top
Optional two-part table top with head section angle adjustment
Sturdy construction
Foot control and fixing plate for foot control
Powerful 230V motor
Multiple upholstery colors and several high-quality upholstery materials
available: Skai Fashion (16 options), Skai Clinica (3 options), Nature (5 options)

Accessories

Two-part table top with gas spring adjusted head section
Special width 140 cm
Breathing hole
Breathing hole cover
Centrally lockable casters



Bobath mat table with one-part table top

Tilt Table Multi-Tilt

The tilt table is designed for helping patients get back on their feet and for strengthening therapy. The table features electrical height adjustment 45-80 cm, and electric angle adjustment from horizontal to 90 degrees. Quality construction and features ensure patient safety. The table is ergonomically designed and the top is upholstered to a high standard, complete with cushioned edges. The hand grips can be locked into stainless steel rails at the sides of the table, and their position is steplessly adjustable. The product features two attachment straps as standard, as well as a wider belt to support the patient's lower limbs.

Strengthening and Getting Patients Back on Their Feet



Lojer Tilt table
Notice! Working table is an optional feature.



Technical specifications

Length	190 cm
Width	67 cm
Angle adjustment range (electric)	0..90°
Angle adjustment speed (s)	~27 s (full movement)
Height adjustment range	45..80 cm
Safe working Load (SWL)	180 kg
Weight	120 kg
Electrical system	230 V
CE-marked	Yes
Country of Manufacture	Finland

Features

- Electric height adjustment
- Electric angle adjustment
- Side rails (10x25 mm)
- Adjustable angle foot board
- Hand grips
- Attachment belts (Knee attachment belt and Hip/chest attachment belt)
- Manual tilt function emergency lowering
- Centrally lockable Ø125mm casters
- Standard color is Platin, other colors are optional

Accessories

- Hand grips with elbow supports
- Reading and meal tray for the Lojer Multi-Tilt table
- Multiple upholstery colors and several high-quality upholstery materials available as optional feature:
 - Skai Fashion (16 color options)
 - Skai Clinica (3 color options)
 - Nature (5 color options)



Working table



Elbow support

Capre BC Beauty Chair

The luxurious Lojer Capre treatment chair has been designed together with beauty professionals to fulfil today's treatment requirements. Pleasantly soft contoured imitation leather, individual adjustment possibilities with three motors and luxuries such as a stand for a tablet PC and an LED light combine to make a product that enhances the image of any clinic or treatment centre. The chair is universally suitable for cosmetologists, masseurs, pedicurists and tattoo artists, among others.

The control system allows electrical adjustment of the chair height as well as the angle of the back section and seat section. The control system also allows use three pre-programmed positions for the chair. Moving to pre-programmed position happens easily by pressing just one button. The head section has a face cut-out and features lengthways adjustment and angle adjustment mechanisms. The leg sections are gas spring adjusted and they can be fully turned to the side, out of the way. The leg section also features lengthways adjustment. The arm rests can be turned 180° and the optional multi-function arm rests also feature angle adjustment.

Highest quality solutions for beauty treatment – suitable for cosmetologists, masseurs, pedicurists and tattoo artists





Technical specifications

Total length:	186..213 cm
Height adjustment:	60..85 cm
Castors:	Ø 75mm, centrally locking
Back section adjustment:	0°..+90°
Head section adjustment:	0°..10°
Back section length:	600 mm
Seat adjustment:	+12°..0°
Seat width:	620 mm
Total width:	880 mm
Leg section adjustment:	-80°...0 °, sideways rotation -0°...90°
Arm support adjustment:	0°..180° rotation, -45°..+20° angle
Safe Working Load (SWL):	160 kg
USB output:	Power 4W

Features

Luxurious anatomically contoured upholstery
 Two colour options for the plastic parts
 Upholstery SKAI Fashion (16 options)
 Castors for moving the chair, centrally lockable
 Hand controller
 Motorised adjustment of back section
 Motorised adjustment of seat angle
 Motorised height adjustment
 3 pre-programmed positions
 Gas spring adjusted, sideways folding leg sections
 Head section length and angle adjustment
 Arm rests stay horizontal regardless of back section angle
 180° rotation of arm rests
 Safe, quiet 24V electrical system, USB charger
 Warranty 2 years
 Warranty (years) 2/10 y
 Country of Manufacture Finland

Accessories

Foot controller for height adjustment
 Tray
 Tablet PC stand with flexible neck
 Plug for face cut-out
 Decorative stitching in the upholstery
 LED light
 Battery operation



Coffee tray

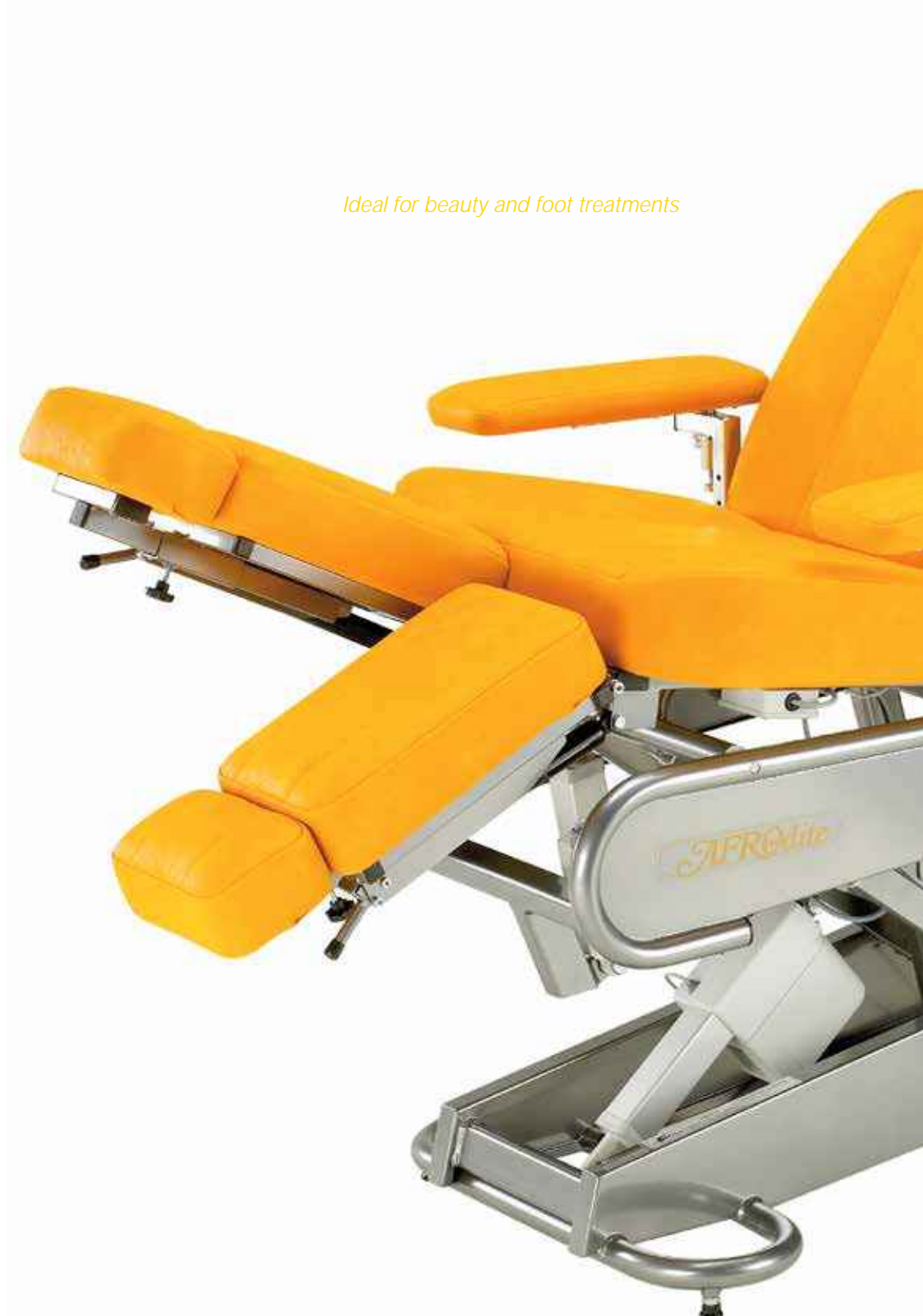


Led light

Afrodite Beauty Chair

The diverse Afroditte treatment chair is ideal for beauty and foot treatments. Adding the optional extra arm rests to the sides of the face section creates a luxurious treatment table for massage, whole body treatments or different types of therapy. All Afroditte chairs feature length adjustment of leg section and adjustment of the head section angle. Due to its many adjustments, this chair is an ideal multi-purpose chair for cosmetologists, masseurs, pedicurists and tattoo artists.

Ideal for beauty and foot treatments





Technical specifications

Overall length	195 cm
Height adjustment range	64..84 cm or 60..94 cm
Safe Working Load	200 kg
Electrical system	230 V
Weight	60..75 kg (depending on model)
Warranty	3 / 10 years
Country of manufacture	Finland

Features

Adjustment of leg section up to 120 cm

Leg sections can be lengthened

Height and sideways adjustment

Adjustable neck support / face section

Choice of 21 high quality upholstery options (SKAI and Nature)

AFRODITE 1M: Single motor chair with motorised height adjustment, and manual back section tilt adjustment with a gas spring.

Height adjustment range 64-84cm.

AFRODITE 2M: Two motor treatment chair with motorised height and back section adjustment. Height adjustment range 64-84cm.

AFRODITE 3M: Three motor treatment chair with motorised height, back section angle and seat front edge angle adjustment.

The height and the angle of the front edge of the seat are adjusted by foot pedal and the back section tilt by hand controller.

Height adjustment range 60-94 cm.

Accessories

Height adjustable arm rests to the sides of the face section

Practical, small and easy to move foot bowl

Chrome-plated pushing handle to enable easier maneuvering of the foot bowl

Lojer Pulleys

PULLEY

With its range of accessories, the Lojer Pulley is one of the most diverse pieces of medical training therapy equipment. The pulley is used in physiotherapy and other forms of therapy to train and strengthen different parts of the body, even the entire body. A pulley enables precisely defined use of resistance, with sufficiently small weights and small increments. Depending on the type of exercises, the pulley can be used to improve circulation, co-ordination, endurance or strength.

The purpose of its versatility is to assist the therapist in giving the patient an accurate training dosage, in order to restore functional qualities like circulation, co-ordination, endurance and strength to the musculoskeletal system. There is two Lojer Pulley models: Lojer Pulley with 14 kg (13 x 1,0 kg + 2 x 0,5 kg) and Lojer Pulley with 20 kg (19 x 1,0 kg + 2 x 0,5 kg). Both includes weight stack, encasement, one handle, wall model.

VERTICAL PULLS (LAT PULLS)

The Lojer Vertical Pulls expand and improve the number of prescribed exercises for large muscle groups, Moreover, the weight of the patient can be reduced during the exercise by using the negative weight bar, thus lighter exercises are possible. By changing the rope length and rope position pull-up and rowing functions are available for optimal rehabilitation of the back and lower quarter, including developing proper lifting techniques. There is three Vertical Pull -models: Lojer VERTICAL PULL with 50 kg weight stack (10 x 5 kg), with 80 kg weight stack (16 x 5 kg) and with 100 kg weight stack (20 x 5 kg). All models includes encasement, one handle and wall model.



Technical specifications

	Pulley	Vertical pull
Overall height	230 cm	228..298 cm
Width	26 cm	51 cm
Depth	24 cm	77 cm
Total weight	44 kg (with 14 kg weight stack) 50 kg (with 20 kg weight stack)	139 kg (with 50 kg weight stack) 169 kg (with 80 kg weight stack) 189 kg (with 100 kg weight stack)
CE-marked	Yes	YES
Warranty	2 / 10 years	2 / 10 years
Country of Manufacture	Finland	Finland

Features

CE-marked medical equipment
 Sturdy construction
 Weight stack covered with steel casing for safety
 The height of the pulling handle and the length of the cord can be adjusted in 5 cm increments
 Quiet, smooth resistance across the whole range of movement
 Six (Vertical Pull) and four (Pulley) fixing points for fixing against a wall
 Height steplessly adjustable according to the height of the room, between 228 cm and 198 cm (Vertical Pull)
 One pulling handle as standard (Pulley)

Accessories

Padded bands, various sizes
 Leather bands, various sizes
 Rotation band
 Support bar
 Extra set of weights (3 x 0,25kg) (Pulley)
 Gantry
 Triceps handle
 Rowing handle
 Training glove
 Negative weight bar (Vertical Pull)



Negative weight bar (Vertical Pull)



Support bar



Training glove

Benches



Angle Bench



3-section Bench

Lojer Speed Pulleys

Very popular models due to their versatility. When the training resistance is selected correctly, the completion of the movement is right, range of motion is right, the starting position is right and the training devices are meant for this type of training, then the therapy can be successful providing best results. The aim of the training can be better coordination, to normalize motored control and muscle balance or just to improve muscle balance. When the drills have been selected to be suitable for each situation, then the normal muscle endurance and/or the normal muscle strength can be achieved in normal range of movement needed at each time.

By “slowing down” the movement of the weight stack in relation to the speed of the pulley rope (please look at the resistance matrix herewith), Lojer SpeedPulley also allows the utilization of speed variation in advanced rehabilitation. There are three models of Lojer SpeedPulley: 50 kg – with 20 x 2,5 kg weight stack, 80 kg – with 32 x 2,5 kg weight stack and 100 kg – with 40 x 2,5 kg weight stack (all includes encasement, two handles, wall model). And one model of Lojer Mobile Speed Pulley 50 kg – with 20 * 2,5 kg weight stack, encasement, two handles, mobile, with four retractable casters.

Mobile SpeedPulley 50 kg



SpeedPulley 50 kg



Resistance matrix

The ratio of the resistance in the Lojer SpeedPulleys is 1 : 5 for each rope, e.g. weight pin № 5 equals a load of 2,5 kgs per rope. Thus, if you combine the two ropes so that you have only one handle to pull, then the resistance is 5 kgs. When you pull the rope of the Lojer SpeedPulley one meter, the weight stack rises only about 20 cm. This means that you can include different motion speeds into your training (e.g. running with extra resistance, throwing motions etc.)

Weight pin №	Weight of the plate(s) total	Total outcoming resistance with one handle	Total outcoming resistance with two handles
1	2,5 kg	0,5 kg	1,0 kg
2	5, 0 kg	1,0 kg	2,0 kg
3	7,5 kg	1,5 kg	3,0 kg
4	10, 0 kg	2,0 kg	4,0 kg
5	12,5 kg	2,5 kg	5,0 kg
6	15, 0 kg	3,0 kg	6,0 kg
7	17,5 kg	3,5 kg	7,0 kg
8	20,0 kg	4,0 kg	8,0 kg
9	22,5 kg	4,5 kg	9,0 kg
10	25,0 kg	5,0 kg	10,0 kg
11	27,5 kg	5,5 kg	11,0 kg
12	30,0 kg	6,0 kg	12,0 kg
13	32,5 kg	6,5 kg	13,0 kg
14	35,0 kg	7,0 kg	14,0 kg
15	37,5 kg	7,5 kg	15,0 kg
16	40,0 kg	8,0 kg	16,0 kg
17	42,5 kg	8,5 kg	17,0 kg
18	45,0 kg	9,0 kg	18,0 kg
19	47,5 kg	9,5 kg	19,0 kg
20	50,0 kg	10,0 kg	20,0 kg

Technical specifications

	SpeedPulley	Mobile SpeedPulley
Overall height	230 cm (with 50 kg weight stack) 216 cm (with 80 kg or 100 kg weight stack)	190 cm
Width	26 cm (with 50 kg weight stack) 51 cm (with 80 or 100 kg weight stack)	66 cm
Depth	24 cm (with 50 kg weight stack) 46 cm (with 80 or 100 kg weight stack)	100 cm
Total weight	81 kg (with 50 kg weight stack) 154 kg (with 80 kg weight stack) 174 kg (with 100 kg weight stack)	85 kg
Castors	-	Ø75 mm, central locking
CE-marked	Yes	Yes
Warranty	2 / 10 years	2 / 10 years
Country of Manufacture	Finland	Finland

Accessories

Padded bands, various sizes
Leather bands, various sizes
Rotation band
Support bar
Gantry
Triceps handle
Rowing handle
Training glove



Padded-anklestrap



Footstrap-maxi



Rowinghandle



Tricepsrope

Cushions, Massage Oils & Creams

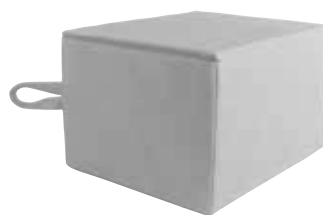
High quality oils and creams for professional use. All Lojer consumables are developed and manufactured in Finland.
All oils can be heated up to 200C (except INERT).



Round cushions



Ankle Cushion



Psoas cushion



Cool Power Cold Gel



Cushions

Psoas Cushion
 Round Cushion 10cm, 15cm and 20cm
 Ankle Cushion
 Wedge Cushion 10cm
 Face Section Pad (oval hole), viscoelastic
 Face Section Pad Sanna (horseshoe type) thin & standard
 Mobilization Wedge "Kaltenborn" 16 x 9 x 5cm
 Mobilization Wedge "Kaltenborn" 20 x 11 x 7cm

Massage oils

GARNATIO OIL	This paraffin based basic oil suits best hairless body parts.
INERT OIL	Non allergic synthetic oil, does not sensitize or irritate skin.
PEANUT OIL	Thicker than massnut oil, suitable for massage of dry and hairy skin.
ALMOND OIL	Rather thick, natural oil with fine texture, suitable for massage of dry and hairy skin.
MASSNUT OIL	Medium thick, contains a mixture of peanut and garnatio oil.
ORANGE OIL	Sunflower and garnatio oil mixture, essential orange oil added.
ECO Neutral	The ecological neutral massage oil, does not contain synthetic additives, dyes, perfumes or preservatives.
ECO Ylang Ylang	The ecological massage oil, consists canola, olive, sunflower and ylang ylang oils, does not contain synthetic additives, dyes, perfumes or preservatives.
ECO Chili	The ecological massage oil consists of canola, olive oil, sunflower oil, and chili, does not contain synthetic additives, dyes, perfumes or preservatives.

Massage creams

PROLIVE	Olive oil based, scentless, moisturizes skin.
HERBACUR	Rather thick, coconut fat based. Non perfumed, water soluble, thick cream. Especially suitable for massage of hairy skin.
LA VENDEL	Rather thick, paraffin based, essential lavender oil added.
RUB'IN	Rather thin, lotion-like skin care, nourishing, non stainable.
FINN-SUP	Safe and sensitive - includes Aloe Vera and Chamomile, but no glycerine. Neutral, scentless.

Cool Power Cold Gel

Cool Power is a well-known and efficient Finnish cooling ointment. Thanks to its cream-like texture, Cool Power is easy to spread, as it absorbs quickly and doesn't smear clothes. Cool Power cooling ointment prevents swelling and infections, eases pain and relieves muscle tensions. The effects of the ointment are based on blocking the pain sensors. Blood circulation is quickened by cold, thus forcing the healing process.

Paper products & Protective Sheets

Treatment Table Roll, off white 50cm/ 200m or 60cm/ 200m
 Treatment table Roll, white 50cm/ 200m
 Non Woven Fabric Roll 50cm/ 200m or 70cm/ 200m
 Protective Sheet 47 x 47cm, white
 Protective Paper for Head Section, Non Woven Fabric 35 x 40cm
 Breathing Hole Protective Sheet, 35 x 47cm
 Soft Breathing Hole Protective Sheet 30 x 40cm
 Soft Cover Sheet 40 x 60cm

SKAI® Upholstery – durable, practical and attractive

Lojer products are upholstered using high quality SKAI® imitation leather. Manufactured in Germany, SKAI imitation leather is pleasant on the skin, durable, easy to clean, flame retardant and fulfils the stringent requirements set for materials used in medical equipment.

Skai Fashion

Skai Fashion is a high quality leather-like material. It imitates real leather in both appearance and feel. Skai Fashion material is long-lasting and easy to clean with mild soap and a microfibre cloth. The material is resistant to mild disinfectants but must always be wiped after disinfecting with a clean, damp cloth. Solvents, chlorides, abrasives, chemical cleaning or wax polishes must not be used. The material is flame retardant.



Long-lasting



Anti-fading



Durable



Anti-tearing



Easy clean



BS5852 IS-0+1+5, DIN4102 (Part 1, B1),
DIN4102 (Part 1, B2), DIN53438 (Part 2),
EN1021-1+2, MVSS302, NF M2



snow white



grape+



platin



graphite



ocean



sky



river



aqua



lime+



citron



mango



chili



perle



schoko



espresso+



schwarz

Skai Clinica

Skai Clinica is a high quality synthetic material. The surface of the material is pleasantly smooth and shiny. The material is antibacterial (JIS Z 2801) and resistant to secretions, making it highly recommended for medical applications. The material is biocompatible (according to EN ISO 10993-5) meaning it is safe for skin. Skai Clinica material is also highly durable and is therefore suitable for massage and wellness applications.



Long-lasting



Anti-tearing



Disinfectant resistant



Durable



Anti-bacterial



Anti-fading



Easy clean



Secretion resistant



Oil and grease resistant



Biocompatible



NF M2, BS5852 IS-0+1,
EN1021-1+2, DIN4102 (Part 1, B2),
MVSS302, DIN53438 (Part 2)



perle clinica



river clinica



platin clinica

Nature

The durable, high quality Nature represents a new generation of environmentally friendly materials. The material is in accordance with the Öko-Tex standard and therefore does not include any heavy metals, PVC or phthalates. Thanks to its biocompatibility (EN ISO 10993-5 + 10) the material is safe for the skin. The new Nature feels very comfortable and warmer on the skin than regular artificial leather. It is especially suitable for medical and physiotherapy products.



Anti-fading



Biocompatible



Long-lasting



Anti-tearing



Disinfectant resistant



Durable



Flame retardant: EN 1021-1+2, BS 5852-0+1,
UNI 9175 classe 1, IMO FTPC part 8



night



sea



stone



haze



sand

See our upholstery options for all models:
<http://www.lojer.com/service/material-options>



MEDICAL WELLNESS EQUIPMENT

© Lojer Group 2017. All Rights Reserved.

Lojer Oy, PL 54, 38201 Sastamala, Finland

Tel +358 (0)10 830 6700 | Fax +358 (0)10 830 6702 | info@lojer.com

www.lojer.com