



Simple. Fast. Precise.  
Empowering Point of Care.

Venue™ 50 Ultrasound System



## Challenges in Point of Care

Acute intervention. Chronic patient management. Needle Guidance... Action-oriented patient care. When physicians who use ultrasound at the point of care met with GE scientists, they asked for a system designed for immediate-action workflow, bright-room operation, and precise guidance... throughout the facility.

### Designed for Point of Care

From power up to clean up, delivering crisp images quickly with the simplicity of a tablet were the values users requested that drove the creation of the Venue 50. Ready to go when you are, connected applications are just two taps away. Its seamless control panel helps make disinfection easy.

### Simple

The simplicity of a tablet is just the beginning. Simplifying the workflow to three steps – Home, Scan, Review – makes the system refreshingly straightforward for both the power-user and occasional user.

- **One-button and go.** Choose the probe and application with a single tap. It's more than fast... it helps to ensure that the system is properly set up even when you're in a hurry.
- **The control you'd expect from a tablet.** Pinch, slide, or tap your way through the procedure, even with your gloves on.
- **Simple connectivity.** One tap wirelessly sends images to multiple storage locations.

### Fast

Whether you're measuring seconds for clinical reasons, or you're measuring productivity for business reasons, the Venue 50 was built for speed.

- **Fast boot-up.** Boots up while you put your gloves on.
- **Portable and wireless.** Easily moves from patient to patient on battery power – well-suited to a high paced environment.
- **Lock-up to clean up.** Lock screen mode protects the system settings as you quickly wipe the screen. It's programmable to limit unauthorized access too.

### Precise

Helping to see the origin of the complaint – bony or soft, abdomen or finger, obese or frail, superficial or deep – allows you to visualize the cause and guide the intervention. Precise imaging is at the core of the Venue 50.

- **See the needle tip.** The Venue 50 uses two different types of ultrasound: One for tissue and one for metal. This helps the needle stand out without sacrificing the detail of the target.
- **Gel & go imaging.** Crisp images without the hassle.

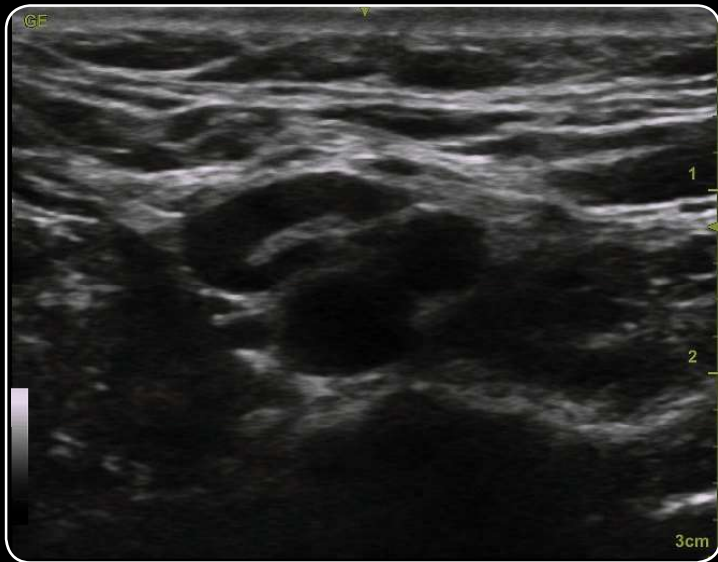


Venue 50 with the Portable Docking Cart

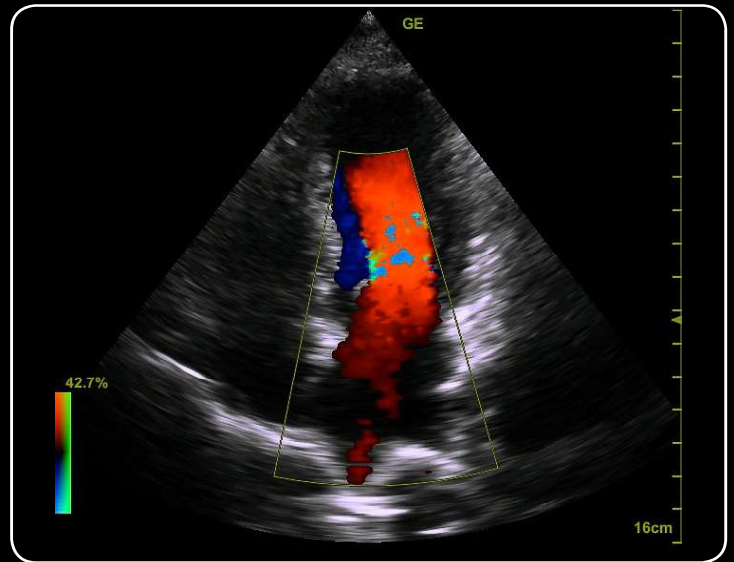


Wide Range of Transducers

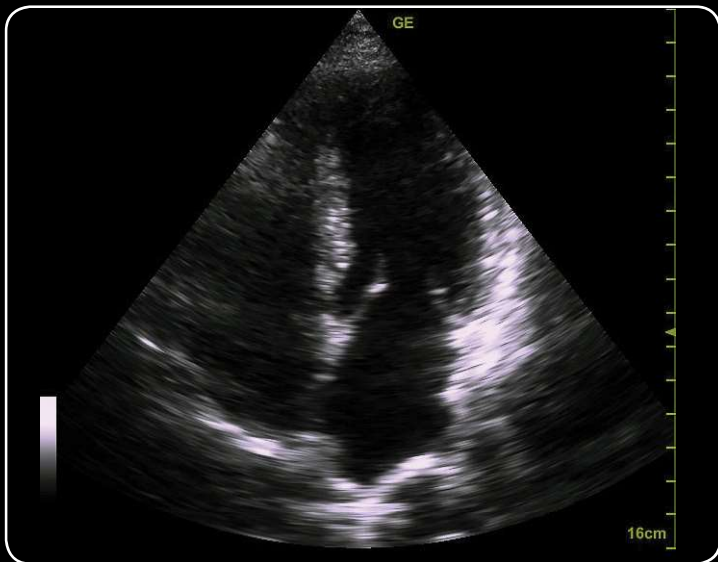




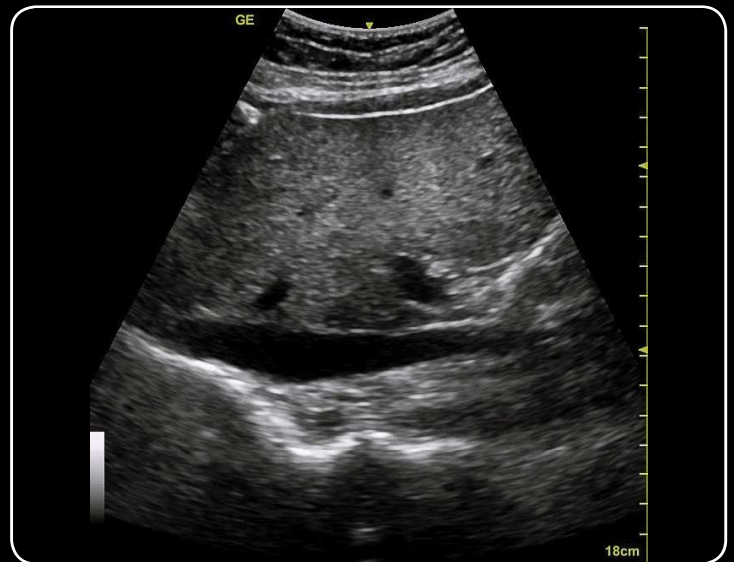
The fatty hilum of the Lymph node is well delineated from the hypoechoic cortex demonstrating excellent contrast resolution



Color filling of the Left ventricle is demonstrated utilizing the 3S



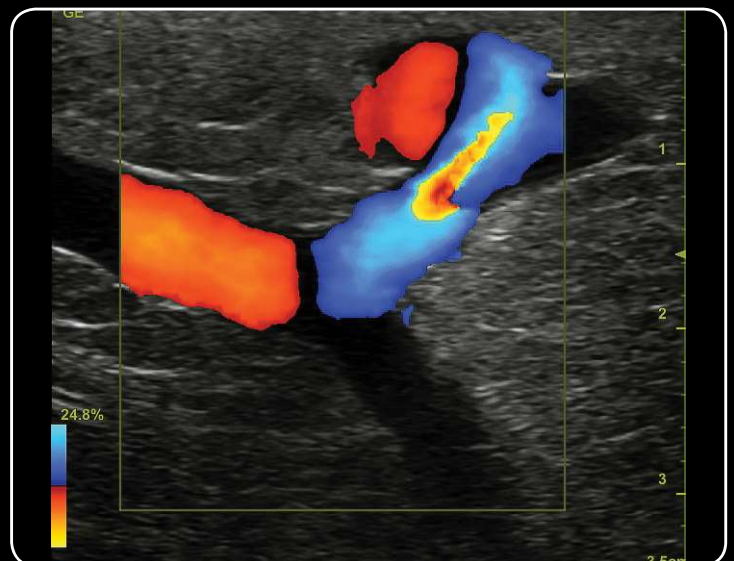
Seeing the detail of the mitral valve, left atrium and ventricle are common using the 3S



The tissue differentiation of the surrounding anatomy around the IVC/Liver is notable using the 4C



Sensitivity of color detected in Lymph node vasculature is common utilizing the 12L



Ability to maintain a great B-mode image while scanning in color is significant operating the 12L

## About GE Healthcare

GE Healthcare provides transformational medical technologies and services to meet the demand for increased access, enhanced quality and more affordable healthcare around the world. GE (NYSE: GE) works on things that matter - great people and technologies taking on tough challenges. From medical imaging, software & IT, patient monitoring and diagnostics to drug discovery, biopharmaceutical manufacturing technologies and performance improvement solutions, GE Healthcare helps medical professionals deliver great healthcare to their patients.

GE Healthcare  
9900 Innovation Drive  
Wauwatosa, WI 53226  
U.S.A.

[www.gehealthcare.com](http://www.gehealthcare.com)

General Electric Company reserves the right to make changes in specifications and features shown herein, or discontinue the product described at any time without notice or obligation. Contact your GE Representative for the most current information.

©2014 General Electric Company — All rights reserved.

Not all features or specifications described in this document may be available in all probes and/or modes.

All probes names include the -SC in the name to identify the connector.

GE Medical Systems Ultrasound & Primary Care Diagnostics, LLC, a General Electric Company, doing business as GE Healthcare.

GE, GE Monogram and Venue 50 are trademarks of General Electric Company or one of its subsidiaries.

GE Healthcare, a division of General Electric Company.

JB20277US  
April 2014

