



Simple. Fast. Precise.
Empowering Musculoskeletal Medicine.

The new LOGIQ™ *e* Ultrasound System



Challenges in musculoskeletal medicine.

Sometimes it's hard to connect the patient's complaint to the specific cause of their pain. That's what MSK specialists told GE scientists. Specifically, they asked for tools to help them get to confident diagnoses quickly and new tools to help guide interventions with precision, almost anywhere in the body.

Designed for musculoskeletal ultrasound

See clearly. See quickly. Guide precisely. Those were the values users requested that drove the creation of the new LOGIQ *e*. Its imaging engine comes from GE's flagship console systems, delivering crisp imaging in a portable package. Innovative musculoskeletal-specific transducers and software help to see the source of pain, guide treatments, and monitor patient progress.

Simple

The LOGIQ *e* gives you many advanced features and its right-out-of-the-box imaging – optimized for musculoskeletal – makes the technology transparent so that you can focus on the patient.

- **Simple consistency.** Patient Follow-up Tool with Fusion helps ensure technical consistency from exam-to-exam to help clinical conclusions not be clouded by inconsistent technique.
- **Simple comparison.** Sometimes comparing left-to-right or before-and-after is the key to clinical decision making. Simultaneous Split Screen makes the comparison nearly automatic.
- **The simplicity of a number.** PDI quantification provides a numeric representation of the blood flow which may be associated with inflammation, tumors, and synovitis.

Fast

Whether you're measuring seconds for clinical reasons, or you're measuring productivity for business reasons, the LOGIQ *e* was built to help make you fast.

- **Need a third hand?** With a needle in one hand, a probe in the other, sometimes you need another person to adjust the image. With system controls on the probe, you may not need the extra hand.
- **Imaging on the go.** Compact and battery-operated, the LOGIQ *e* allows flexibility in moving from patient to patient.



Precise

Helping to see the origin of pain – bony or soft, shoulder or finger, obese or frail, superficial or deep – is fundamental. Precise imaging is at the core of the LOGIQ *e*.

- **Image almost the whole body... and almost any body.** The 1-5MHz curved transducer is versatile for applications from the shoulder to the hip, even in the obese patient. Other transducers image up to 22 MHz for stunning superficial detail.
- **See the inflammation and early disease.** High-Res PDI is a GE exclusive technology to visualize flow in neovascularization.
- **See the needle tip.** The LOGIQ *e* uses two different types of ultrasound: One for tissue and one for metal. This helps the needle stand out and allows separate control of the needle appearance.
- **See in 3D.** Use any transducer¹ to show anatomical relationships intuitively with advanced Easy3D.

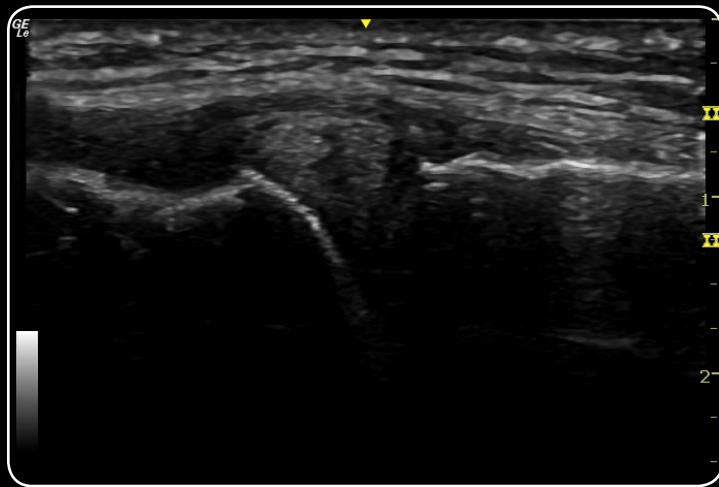
¹"Any transducer" applies to all transducers that have been validated on the new LOGIQ *e*.



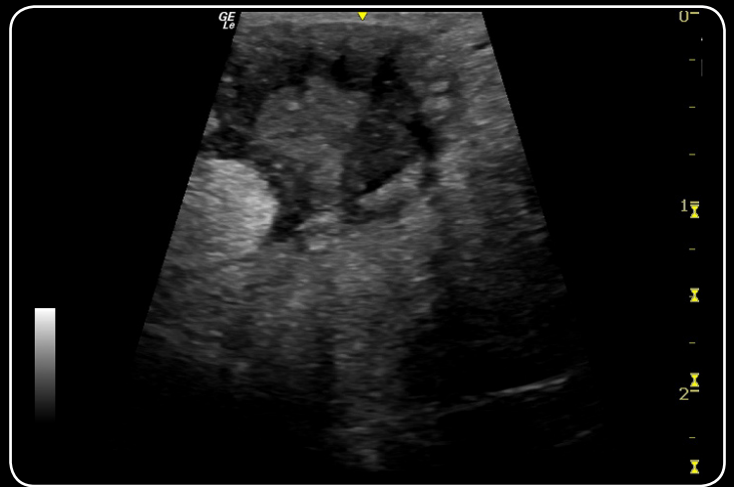
Clarity of the individual tendon fibers are outstanding using the L8-18i in superficial imaging



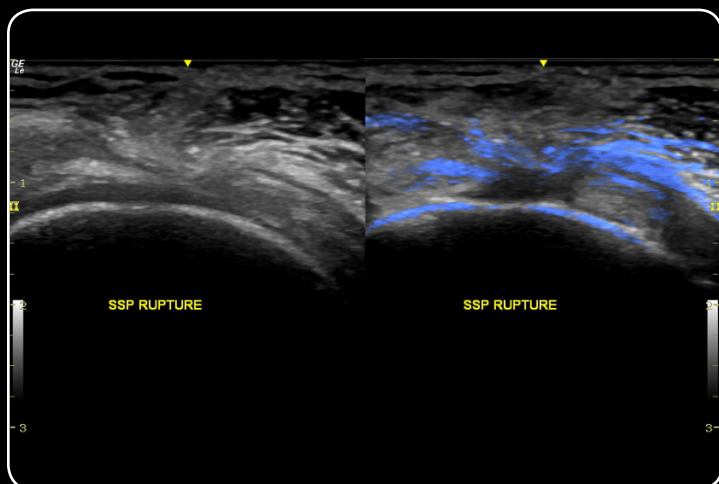
Exceptional detail of the length of the Achilles Tendon is seen using LOGIQ View with the L4-12t



The tissue differentiation of the surrounding anatomy around the Lateral Meniscus is remarkable using the L4-12t



See the multiple layers and echogenic quality of the region of interest at 22MHz imaging on the L10-22 scanning in Virtual Convex



Accurate comparison in Musculoskeletal imaging has been enhanced with the addition of Fusion to the daily workflow



Clarity of the median nerve sheath shows excellent spatial resolution delivered by the 12L

About GE Healthcare

GE Healthcare provides transformational medical technologies and services to meet the demand for increased access, enhanced quality and more affordable healthcare around the world. GE (NYSE: GE) works on things that matter - great people and technologies taking on tough challenges. From medical imaging, software & IT, patient monitoring and diagnostics to drug discovery, biopharmaceutical manufacturing technologies and performance improvement solutions, GE Healthcare helps medical professionals deliver great healthcare to their patients.

GE Healthcare
9900 Innovation Drive
Wauwatosa, WI 53226
U.S.A.

www.gehealthcare.com

General Electric Company reserves the right to make changes in specifications and features shown herein, or discontinue the product described at any time without notice or obligation. Contact your GE Representative for the most current information.

©2014 General Electric Company—All rights reserved.

Not all features or specifications described in this document may be available in all probes and/or modes.

All probes names include the -RS in the name to identify the connector.

GE Medical Systems Ultrasound & Primary Care Diagnostics, LLC, a General Electric Company, doing business as GE Healthcare.

GE, GE Monogram and LOGIQ are trademarks of General Electric Company or one of its subsidiaries.

GE Healthcare, a division of General Electric Company.

JB20272US
April 2014

